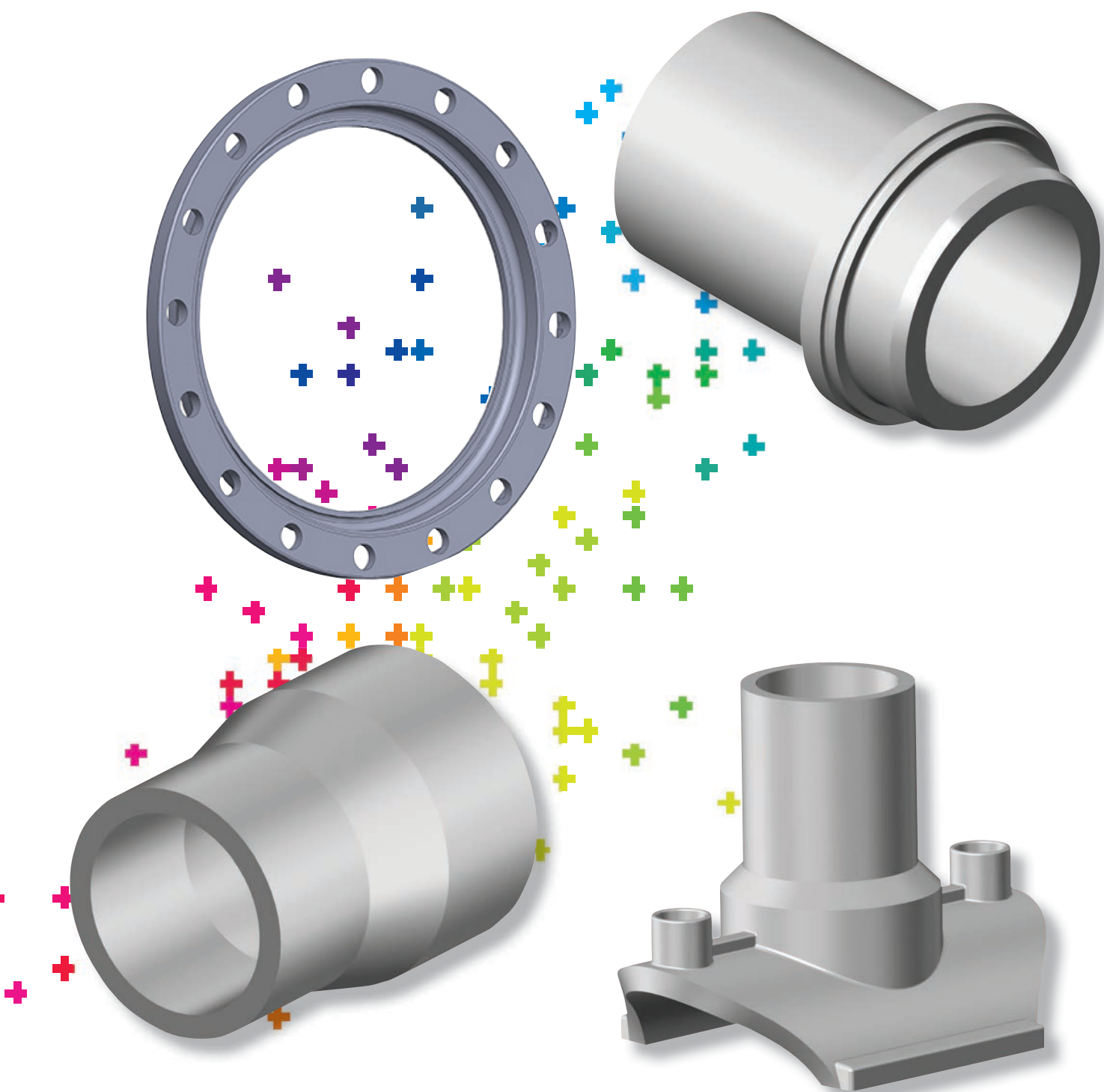


Factory Mutual



Disclaimer

Information in the catalog

GF Central Plastics is as diligent as possible in compiling and updating the information in its catalog. However, GF Central Plastics does not guarantee the correctness and completeness of the information provided in its catalog. Equally, GF Central Plastics does not guarantee that this information is up to date. Drawings dimensions and weights, unless otherwise noted by tolerances, should be considered for reference only and may not reflect the exact physical measurements of the parts. For questions concerning our products, their specifications and their utilization please contact your local Regional Sales Manager or Customer Service Representative of GF Central Plastics. For comments concerning the product catalog, please email gfccentralmarketing@georgfischer.com.

Factory Mutual (FM) Approved Products: Overview

FM Approvals (www.fmapprovals.com) is an international leader in third-party testing and certification services. It tests property loss prevention products and services—for use in commercial and industrial facilities—to verify they meet rigorous loss prevention standards of quality, technical integrity and performance. FM Approvals' worldwide certification process is backed by scientific research and testing, and more than a century of experience. Those products and services that meet FM Approvals' high testing standards, earn the FM APPROVED mark, a certification that is recognized and respected worldwide.

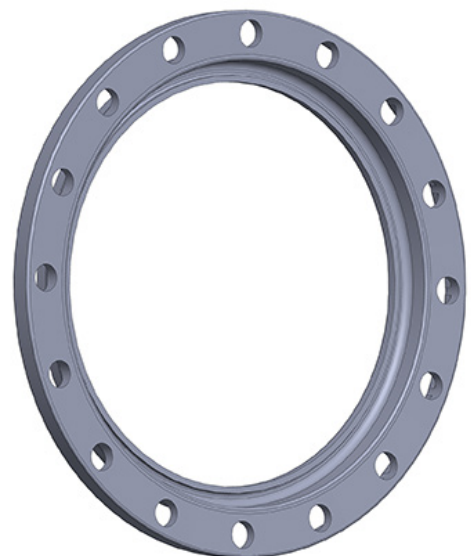
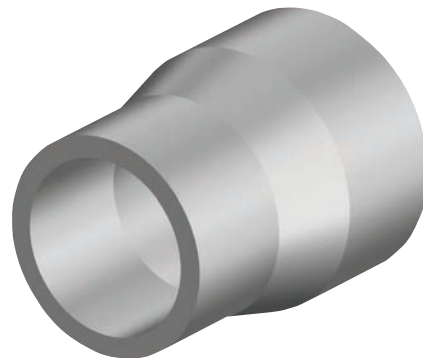
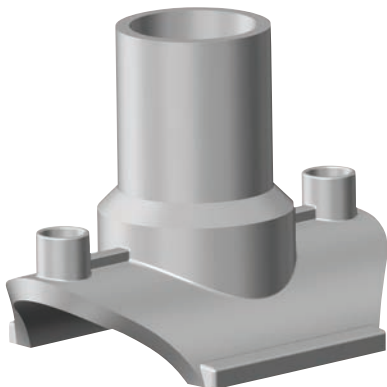
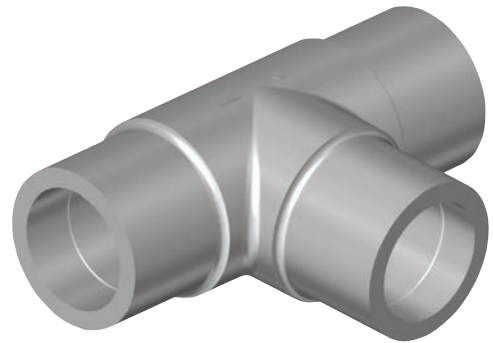


Table of Contents

HDPE Pipe

Industry No Stripe	2
Fire Protection Pipe Red Stripe	29
Potable Water Industry Blue Stripe	42
Waste Water Industry Green Stripe	63
Methane/Propane Natural Gas Industry Yellow Stripe	89
Index	103

Table of contents

Fittings	2
Adapters & Bolt Rings	24
Electrofusion	45
Transition Fittings	48
Fire Protection Pipe - Red Stripe	49
Index	62

Fittings

Table of contents

Caps	1
Reducers	3
Tees	6
Fabricated Tees	7
Fabricated Reducing Tees	10
Elbows	13
Fabricated Elbows	15
Waterstops	23

Caps



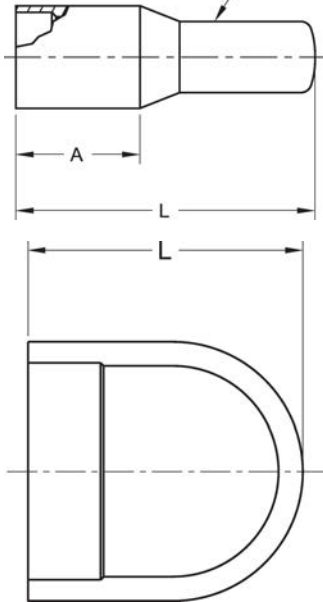
FM FITTINGS: Butt Cap
PE3408/PE4710
IPS, DR9, Class 250

- Approval: ASTM D2513/D3261
- Approval: AWWA C906
- Approval: FM 1613
- Approval: NSF-61

Please call for more information on availability, pricing, other sizes and dimensions.



Note: This end not machined to a nominal pipe diameter unless requested.



Size (inch)	GFCP Part No.	GF weight Part No.	weight (lb)	A (inch)	L (inch)	Box Qty
4	10004174	360 000 350	2.491	3.13	10.70	5
6	10004180	360 000 360	4.343	4.22	10.25	5
8	10004185	360 000 370	9.458	5.14	12.41	6

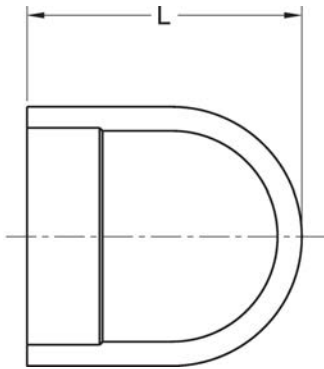


FM FITTINGS: Butt Cap
PE3408/PE4710
IPS, DR11, Class 200

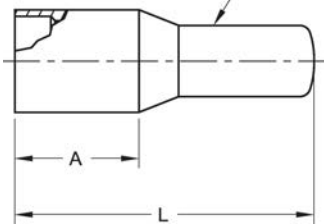
- Approval: ASTM D2513/D3261
 - Approval: AWWA C906
 - Approval: FM 1613
 - Approval: NSF-61
- Please call for more information on availability, pricing, other sizes and dimensions.



Size (inch)	GFCP Part No.	GF Part No.	weight (lb)	A (inch)	L (inch)	Box Qty
4	10004169	360 000 342	1.653	3.00	7.75	10
6	10004176	360 000 353	2.690	4.22	10.25	5
8	10007484	360 000 363	5.975	5.14	7.95	6
10	10009508	360 003 452	11.993		10.06	1



Note: This end not machined to a nominal pipe diameter unless requested.



Reducers



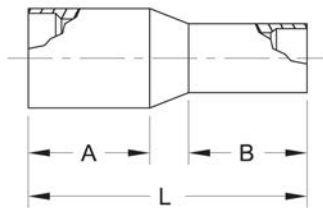
FM FITTINGS: Butt Reducer
PE3408/PE4710
IPS, DR7, Class 335

- Approval: ASTM D2513/D3261
- Approval: AWWA C906
- Approval: FM 1613
- Approval: NSF-61

Please call for more information on availability, pricing, other sizes and dimensions.



APPROVED



Size (inch)	GFCP Part No.	GF Part No.	weight (lb)
6 x 4	REI0604FM3	360 018 379	3.946
8 x 6		360 004 493	4.101
10 x 6	REI1006FM3	360 029 022	26.610
10 x 8	REI1008FM3	360 004 492	3.300
12 x 10	REI1210FM3	360 018 415	0.002
14 x 12	REI1412FM3	360 018 425	40.058
16 x 10	REI1610FM3	360 028 947	0.022
16 x 14	REI1614FM3	360 018 441	0.002
18 x 6		360 031 886	0.022
18 x 12	REI1812FM3	360 029 028	0.022
18 x 16	REI1816FM3	360 018 453	0.002
20 x 16	REI2016FM3	360 028 948	0.022
24 x 8	REI2408FM3	360 028 755	0.022
24 x 10	REI2410FM3	360 028 740	0.022
24 x 16	REI2416FM3	360 028 949	0.022
24 x 20	REI2420FM3	360 028 749	0.022



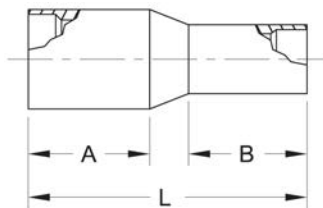
FM FITTINGS: Butt Reducer
PE3408/PE4710
IPS, DR9, Class 250

- Approval: ASTM D2513/D3261
- Approval: AWWA C906
- Approval: FM 1613
- Approval: NSF-61

Please call for more information on availability, pricing, other sizes and dimensions.



APPROVED

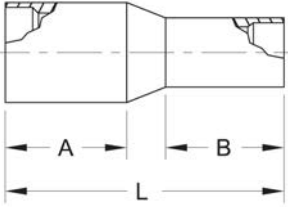


Size (inch)	GFCP Part No.	GF Part No.	weight (lb)	A (inch)	B (inch)	L (inch)	Box Qty
3 x 2	REI0302FM2	360 018 355	0.002				
4 x 2	REI0402FM2	360 018 360	0.002				
4 x 3	REI0403FM2	360 018 366	0.002				
6 x 4	10004222	360 000 457	3.616	4.22	3.75	9.13	5
8 x 6	10004227	360 000 472	7.694	5.00	4.64	10.70	6
8 x 6	10004228	360 000 471	7.738	5.00	4.64	10.70	1
8 x 6	REI0806FM2	360 018 389	6.967				
10 x 8	10000627	360 000 405	19.268	6.00	6.00	16.00	1
10 x 6		360 032 210	22.994				
10 x 8	REI1008FM2	360 018 401	0.002				
12 x 8	REIPIPE00076	360 018 604	0.002				
12 x 10	10000628	360 000 412	27.315	6.63	6.25	14.88	1
12 x 10	REI1210FM2	360 018 414	23.744				
14 x 12	REI1412FM2	360 018 424	0.002				
16 x 8		360 062 134	36.751				
16 x 10		360 032 006	94.997				
16 x 12		360 032 211	76.985				
16 x 14	REI1614FM2	360 018 440	38.867				
18 x 16	REI1816FM2	360 018 452	55.997				

table continued on the next page



Size (inch)	GFCP Part No.	GF Part No.	weight (lb)	A (inch)	B (inch)	L (inch)	Box Qty
20 x 16		360 061 227	116.000				
20 x 18	REI2018FM2	360 018 464	0.002				
22 x 20	REI2220FM2	360 018 475	0.002				
24 x 16		360 062 133	135.298				
24 x 20		360 061 228	185.810				
24 x 22	REI2422FM2	360 018 493	0.002				



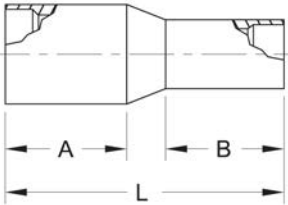
FM FITTINGS: Butt Reducer
PE3408/PE4710
DIPS, DR9, Class 250

- Approval: ASTM D2513/D3261
- Approval: AWWA C906
- Approval: FM 1613
- Approval: NSF-61

Please call for more information on availability, pricing, other sizes and dimensions.



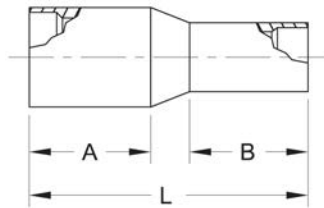
Size (inch)	GFCP Part No.	GF Part No.	weight (lb)
6 x 4	RED0604FM2	360 018 260	3.020
8 x 6	RED0806FM2	360 018 267	0.002
10 x 8	RED1008FM2	360 018 274	15.961
12 x 10	RED1210FM2	360 018 284	0.002
14 x 12	RED1412FM2	360 018 290	0.002





FM FITTINGS: Butt Reducer
PE3408/PE4710
IPS, DR11, Class 200

- Approval: ASTM D2513/D3261
 - Approval: AWWA C906
 - Approval: FM 1613
 - Approval: NSF-61
- Please call for more information on availability, pricing, other sizes and dimensions.

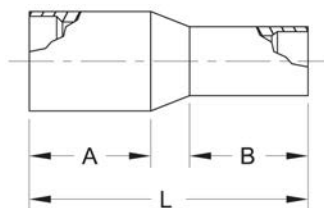


Size (inch)	GFCP Part No.	GF Part No.	weight (lb)	A (inch)	B (inch)	L (inch)	Box Qty
6 x 4	10007784	360 000 066	3.042	6.00	6.00	9.50	5
6 x 4	10004217	360 000 447	3.263	4.22	3.75	9.13	5
8 x 6	10007483	360 000 068	7.011	6.00	6.00	11.81	6
8 x 6	REI0806FM1	360 018 388	0.002				
8 x 6	10004223	360 000 459	6.129	4.95	4.69	10.84	6
10 x 6	REI1006FM1	360 029 021	0.022				
10 x 8	10009509	360 003 453	13.977	6.00	6.00	14.86	1
10 x 8	REI1008FM1	360 018 400	0.002				
12 x 8	REI1208FM1	360 028 555	0.022				
12 x 8	REPIPE00175	360 028 557	0.022				
12 x 10	REI1210FM1	360 018 413	0.002				
12 x 10	10009511	360 003 455	20.194	6.00	6.00	15.00	1
14 x 12	REI1412FM1	360 018 423	0.002				
16 x 6	REI1606FM1	360 028 622	0.022				
16 x 8	REI1608FM1	360 028 626	0.022				
16 x 14	REI1614FM1	360 018 439	37.787				
18 x 6	REI1806FM1	360 028 660	0.022				
18 x 8	REI1808FM1	360 028 664	0.022				
18 x 10	REI1810FM1	360 028 653	0.022				
18 x 16	REI1816FM1	360 018 451	47.951				
20 x 16	REI2016FM1	360 028 694	0.022				
20 x 18	REI2018FM1	360 018 463	0.002				
24 x 18	REI2418FM1	360 028 747	0.022				
24 x 16	REI2416FM1	360 028 744	0.022				
24 x 20	REI2420FM1	360 028 748	0.022				



FM FITTINGS: Butt Reducer
PE3408/PE4710
IPS, DR11, Class 250

- Approval: ASTM D2513/D3261
 - Approval: AWWA C906
 - Approval: FM 1613
 - Approval: NSF-61
- Please call for more information on availability, pricing, other sizes and dimensions.



Size (inch)	GFCP Part No.	GF Part No.	weight (lb)
12 - 8		360 061 848	46.600

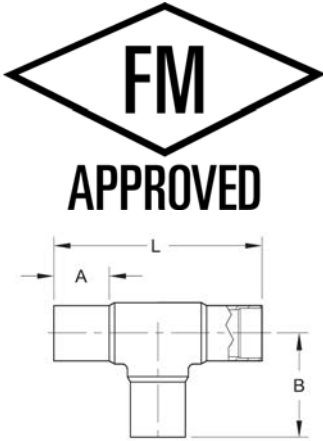
Tees



FM FITTINGS: Butt Tee
PE3408/PE4710
IPS, DR9, Class 250

- Approval: ASTM D2513/D3261
- Approval: AWWA C906
- Approval: FM 1613
- Approval: NSF-61

Please call for more information on availability, pricing, other sizes and dimensions.



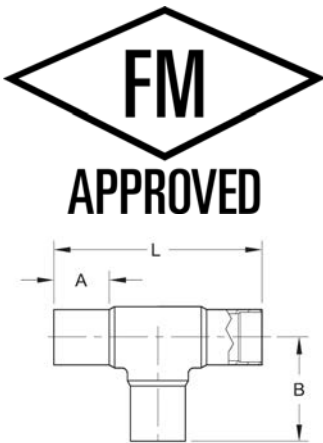
Size (inch)	GFCP Part No.	GF Part No.	weight (lb)	A (inch)	B (inch)	L (inch)	Box Qty
4	10002074	360 000 533	3.902	3.00	5.60	11.20	10
6	10004263	360 000 547	15.102	4.38	9.00	18.00	1
6	10004264	360 000 546	14.595	4.45	9.00	18.00	1
6		360 032 031	0.000				
8	10004273	360 000 560	34.106	6.00	12.00	24.00	1
8	10004274	360 000 559	34.414	6.00	12.00	24.00	1
10	10004239	360 000 500	55.094	6.00	13.25	26.50	1
12	10004247	360 000 513	91.007	7.50	15.88	31.75	1



FM FITTINGS: Butt Tee
PE3408/PE4710
IPS, DR11, Class 200

- Approval: ASTM D2513/D3261
- Approval: AWWA C906
- Approval: FM 1613
- Approval: NSF-61

Please call for more information on availability, pricing, other sizes and dimensions.



Size (inch)	GFCP Part No.	GF Part No.	weight (lb)	A (inch)	B (inch)	L (inch)	Box Qty
4	10004255	360 000 525	4.542	2.90	6.87	13.73	10
6	10007787	360 000 538	10.560	4.89	9.00	18.00	1
8	10004268	360 000 550	26.896	6.00	12.00	24.00	1
8	10007789	360 000 551	29.895	6.00	12.00	24.00	1
10	10004233	360 000 053	50.001	6.00	13.25	26.50	1
12	10004242	360 000 504	77.007	7.50	15.88	31.75	1

Fabricated Tees



FM FITTINGS: Fabricated Butt Fusion Tee
PE3408/PE4710
IPS, DR7, Class 250

- Approval: AWWA C906
 - Approval: NSF-61
 - Approval: FM 1613
- Please call for more information on availability, pricing, other sizes and dimensions.

Size (inch)	GFCP Part No.	GF Part No.	weight (lb)
20	LTI2000FM2	360 017 278	0.002
24	LTI2400FM2	360 017 291	448.001



FM FITTINGS: Fabricated Butt Fusion Tee
PE3408/PE4710
IPS, DR7, Class 335

- Approval: AWWA C906
 - Approval: NSF-61
 - Approval: FM 1613
- Please call for more information on availability, pricing, other sizes and dimensions.

Size (inch)	GFCP Part No.	GF Part No.	weight (lb)
4	LTI0400FM3	360 017 213	0.002
6	LTI0600FM3	360 017 225	0.002
8	LTI0800FM3	360 017 235	0.002
10	LTI1000FM3	360 004 476	153.993
12	LTI1200FM3	360 017 251	0.002
14	LTI1400FM3	360 017 258	286.006
16	LTI1600FM3	360 028 590	0.022
18	LTI1800FM3	360 017 272	0.002
20	LTI2000FM3	360 017 279	0.002
24	LTI2400FM3	360 028 717	0.022



FM FITTINGS: Fabricated Butt Fusion Tee
PE3408/PE4710
DIPS, DR7, Class 250

- Approval: AWWA C906
 - Approval: NSF-61
 - Approval: FM 1613
- Please call for more information on availability, pricing, other sizes and dimensions.

Size (inch)	GFCP Part No.	GF Part No.	weight (lb)
10	LTD1000FM2	360 017 154	0.002
12	LTD1200FM2	360 017 160	0.002
14	LTD1400FM2	360 017 165	245.419
24	LTD2400FM2	360 017 187	0.002



FM FITTINGS: Fabricated Butt Fusion Tee
PE3408/PE4710
IPS, DR9, Class 200

- Approval: AWWA C906
 - Approval: NSF-61
 - Approval: FM 1613
- Please call for more information on availability, pricing, other sizes and dimensions.

Size (inch)	GFCP Part No.	GF Part No.	weight (lb)
10	LTI1000FM1T11	360 028 481	67.682
12	LTI1200FM1T11	360 028 523	102.228
14		360 061 548	384.260
16	LTI1600FM1	360 017 264	0.002
16		360 032 008	305.010
18		360 032 161	411.030



FM FITTINGS: Fabricated Butt Fusion Tee
PE3408/PE4710
IPS, DR9, Class 250

- Approval: AWWA C906
 - Approval: NSF-61
 - Approval: FM 1613
- Please call for more information on availability, pricing, other sizes and dimensions.

Size (inch)	GFCP Part No.	GF Part No.	weight (lb)
8	LTI0800FM2	360 017 234	34.591
10	LTI1000FM2	360 017 244	0.002
12	LTI1200FM2	360 017 250	0.002
14	LTI1400FM2	360 017 257	0.002
16	LTI1600FM2	360 017 265	167.992
18	LTI1800FM2	360 017 271	0.002



FM FITTINGS: Fabricated Butt Fusion Tee
PE3408/PE4710
DIPS, DR9, Class 200

- Approval: AWWA C906
 - Approval: NSF-61
 - Approval: FM 1613
- Please call for more information on availability, pricing, other sizes and dimensions.

Size (inch)	GFCP Part No.	GF Part No.	weight (lb)
16	LTD1600FM1	360 017 170	0.002



FM FITTINGS: Fabricated Butt Fusion Tee
PE3408/PE4710
IPS, DR11, Class 200

- Approval: AWWA C906
- Approval: NSF-61
- Approval: FM 1613

Please call for more information on availability, pricing, other sizes and dimensions.

Size <small>(inch)</small>	GFCP Part No.	GF Part No.	weight <small>(lb)</small>
8	LT10800FM1	360 017 233	0.002
10	LT11000FM1	360 017 243	0.002
12	LT11200FM1	360 017 249	0.002
14	LT11400FM1	360 017 256	0.002
18	LT11800FM1	360 017 270	0.002
20	LT12000FM1	360 017 277	0.002
24	LT12400FM1	360 017 290	0.002

Fabricated Reducing Tees



FM FITTINGS: Fabricated Butt Fusion Reducing Tee
PE3408/PE4710
IPS, DR5, Class 335

- Approval: AWWA C906
- Approval: NSF-61
- Approval: FM 1613

Size (inch)	GFCP Part No.	GF Part No.	weight (lb)
16 x 8	RTI1608FM3	360 019 027	0.002
20 x 8	RTI2008FM3	360 019 110	0.002
24 x 16		360 031 943	1230.000



FM FITTINGS: Fabricated Butt Fusion Reducing Tee
PE3408/PE4710
IPS, DR7, Class 250

- Approval: AWWA C906
 - Approval: NSF-61
 - Approval: FM 1613
- Please call for more information on availability, pricing, other sizes and dimensions.

Size (inch)	GFCP Part No.	GF Part No.	weight (lb)
6 x 3	RTI0603FM2	360 018 874	0.002
8 x 4	RTI0804FM2	360 018 896	0.220
10 x 2	RTI1002FM2	360 018 906	0.002
10 x 6	RTI1006FM2	360 018 922	42.946
14 x 3	RTI1403FM2	360 018 973	0.002
14 x 12	RTI1412FM2	360 018 999	0.002
22 x 12	RTI2212FM2	360 019 161	0.002
24 x 8	RTI2408FM2	360 019 197	0.002



FM FITTINGS: Fabricated Butt Fusion Reducing Tee
PE3408/PE4710
DIPS, DR7, Class 250

- Approval: AWWA C906
 - Approval: NSF-61
 - Approval: FM 1613
- Please call for more information on availability, pricing, other sizes and dimensions.

Size (inch)	GFCP Part No.	GF Part No.	weight (lb)
8 x 6	RTD0806FM2	360 018 691	0.002
10 x 6	RTD1006FM2	360 018 699	0.002
12 x 6	RTD1206FM2	360 018 715	0.002
16 x 6	RTD1606FM2	360 018 755	0.002
16 x 12	RTD1612FM2	360 018 769	0.002
18 x 12	RTD1812FM2	360 018 790	237.261



FM FITTINGS: Fabricated Butt Fusion Reducing Tee
PE3408/PE4710
IPS, DR7, Class 335

- Approval: AWWA C906
- Approval: NSF-61
- Approval: FM 1613

Please call for more information on availability, pricing, other sizes and dimensions.

Size (inch)	GFCP Part No.	GF Part No.	weight (lb)
8 x 6	RTI0806FM3	360 004 491	2.701
10 x 4	RTI1004FM3	360 004 473	31.548
10 x 6	RTI1006FM3	360 004 474	45.999
10 x 8	RTI1008FM3	360 004 475	66.000
12 x 6	RTI1206FM3	360 018 951	82.012
12 x 6		360 061 105	184.000
12 x 8	RTI1208FM3	360 018 958	0.002
12 x 10	RTI1210FM3	360 018 964	122.004
14 x 6	RTI1406FM3	360 018 984	88.009
14 x 8	RTI1408FM3	360 018 989	114.001
14 x 12		360 062 135	154.500
16 x 6	RTI1606FM3	360 019 022	0.002
16 x 10	RTI1610FM3	360 019 033	0.002
16 x 12	RTI1612FM3	360 019 039	0.002
16 x 14	RTI1614FM3	360 028 618	0.022
18 x 6	RTI1806FM3	360 019 061	0.002
18 x 8	RTI1808FM3	360 019 066	0.002
18 x 10	RTI1810FM3	360 019 071	210.145
18 x 12	RTI1812FM3	360 019 077	0.002
20 x 6	RTI2006FM3	360 019 104	0.002
20 x 10	RTI2010FM3	360 019 116	0.002
20 x 12	RTI2012FM3	360 019 122	0.002
20 x 14	RTI2014FM3	360 028 999	0.022
20 x 16	RTI2016FM3	360 028 695	0.022
24 x 6	RTI2406FM3	360 019 192	0.002
24 x 8	RTI2408FM3	360 019 198	0.002
24 x 10	RTI2410FM3	360 019 205	0.002
24 x 12	RTI2412FM3	360 019 212	0.002



FM FITTINGS: Fabricated Butt Fusion Reducing Tee
PE3408/PE4710
IPS, DR9, Class 250

- Approval: AWWA C906
- Approval: NSF-61
- Approval: FM 1613

Please call for more information on availability, pricing, other sizes and dimensions.

Size (inch)	GFCP Part No.	GF Part No.	weight (lb)
3 x 2	RTI0302FM2	360 018 850	0.002
4 x 2	RTI0402FM2	360 018 856	6.967
6 x 2	RTI0602FM2	360 018 867	12.346
6 x 4	RTI0604FM2	360 018 880	16.006
8 x 3	RTI0803FM2	360 018 891	0.002
8 x 6	RTI0806FM2	360 018 902	0.002
10 x 4	RTI1004FM2	360 018 918	36.685
10 x 8	RTI1008FM2	360 018 928	2.205
12 x 4	RTI1204FM2	360 018 944	56.218
12 x 6	RTI1206FM2	360 018 950	64.000
12 x 8	RTI1208FM2	360 018 957	86.002
12 x 10	RTI1210FM2	360 018 963	98.657
14 x 2	RTI1402FM2	360 018 968	0.002

table continued on the next page



Size (inch)	GFCP Part No.	GF Part No.	weight (lb)
14 x 6	RTI1406FM2	360 018 983	67.131
14 x 8	RTI1408FM2	360 018 988	100.002
14 x 10	RTI1410FM2	360 018 994	116.007
16 x 2	RTI1602FM2	360 019 005	0.002
16 x 4	RTI1604FM2	360 019 016	98.436
16 x 6	RTI1606FM2	360 019 021	0.002
16 x 8	RTI1608FM2	360 019 026	112.502
16 x 10	RTI1610FM2	360 019 032	158.005
16 x 12	RTI1612FM2	360 019 038	174.386
16 x 14		360 032 007	206.000
18 x 12	RTI1812FM2	360 019 076	0.002
20 x 8	RTI2008FM2	360 019 109	0.002
20 x 12	RTI2012FM2	360 019 121	283.999
24 x 6	RTI2406FM2	360 019 191	207.653

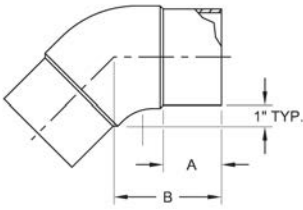


**FM FITTINGS: Fabricated Butt Fusion Reducing Tee
PE3408/PE4710
IPS, DR11, Class 200**

- Approval: AWWA C906
 - Approval: NSF-61
 - Approval: FM 1613
- Please call for more information on availability, pricing, other sizes and dimensions.

Size (inch)	GFCP Part No.	GF Part No.	weight (lb)
8 x 3	RTI0803FM1	360 018 890	0.002
8 x 6	RTI0806FM1	360 018 901	0.002
10 x 4	RTI1004FM1	360 018 917	0.002
10 x 6	RTI1006FM1	360 018 921	0.002
10 x 8	RTI1008FM1	360 018 927	0.002
12 x 6	RTI1206FM1	360 018 949	0.002
12 x 8	RTI1208FM1	360 018 956	0.002
12 x 10	RTI1210FM1	360 018 962	74.009
16 x 6	RTI1606FM1	360 019 020	0.002
16 x 8	RTI1608FM1	360 019 025	0.002
16 x 12	RTI1612FM1	360 019 037	0.002
18 x 8	RTI1808FM1	360 019 064	0.002
18 x 10	RTI1810FM1	360 019 069	0.002
18 x 12	RTI1812FM1	360 019 075	0.002
20 x 8	RTI2008FM1	360 019 108	0.002
24 x 6	RTI2406FM1	360 019 190	0.002
24 x 8	RTI2408FM1	360 019 196	0.002
24 x 12	RTI2412FM1	360 019 210	0.002

Elbows

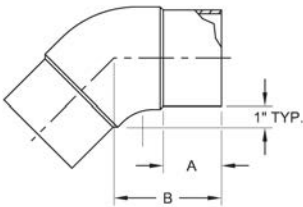


**FM ELBOWS: 45° Butt Elbow
PE3408/PE4710
IPS, DR9, Class 250**

- Approval: ASTM D2513
- Approval: ASTM D3261
- Approval: AWWA C906
- Approval: NSF-61
- Approval: FM 1613

Please call for more information on availability, pricing, other sizes and dimensions.

Size (inch)	GFCP Part No.	GF Part No.	GF weight (lb)	A (inch)	B (inch)	Box Qty
2		360 032 081	1.499			
3	ELI0345F2M	360 015 874	0.002			
4	10004093	360 000 202	3.153	3.000	5.000	10
6	ELI0645F2M	360 015 960	0.002			



**FM ELBOWS: 45° Butt Elbow
PE3408/PE4710
IPS, DR11, Class 200**

- Approval: ASTM D2513
- Approval: ASTM D3261
- Approval: AWWA C906
- Approval: NSF-61
- Approval: FM 1613

Please call for more information on availability, pricing, other sizes and dimensions.

Size (inch)	GFCP Part No.	GF Part No.	GF weight (lb)	A (inch)	B (inch)	Box Qty
4	10009504	360 029 039	3.020	3.88	5.00	10
6	10009505	360 028 266	8.620	4.96	7.00	2
8	10009506	360 019 868	18.629	6.56	11.00	2
10	10004071	360 000 052	40.763	6.00	13.25	1
12	10004079	360 000 178	64.000	7.50	15.75	1



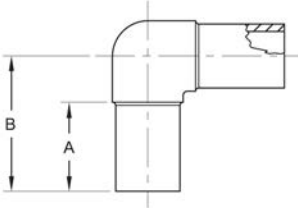
FM ELBOWS: 90° Butt Elbow
PE3408/PE4710
IPS, DR9, Class 250

- Approval: ASTM D2513
- Approval: ASTM D3261
- Approval: AWWA C906
- Approval: FM 1613
- Approval: NSF-61

Please call for more information on availability, pricing, other sizes and dimensions.



Size (inch)	GFCP Part No.	GF Part No.	weight (lb)	A (inch)	B (inch)	Box Qty
2	ELI0290F2M	360 015 862	0.683			
3	ELI0390F2M	360 015 883	0.002			
4	ELI0490F2M	360 015 929	0.002			
6	ELI0690F2M	360 015 979	0.002			
8	10004156	360 000 308	20.393	6.000	12.000	2



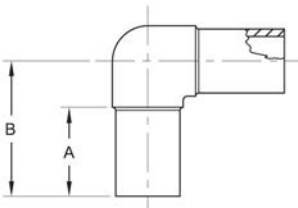
FM ELBOWS: 90° Butt Elbow
PE3408/PE4710
IPS, DR11, Class 200

- Approval: ASTM D2513
- Approval: ASTM D3261
- Approval: AWWA C906
- Approval: FM 1613
- Approval: NSF-61

Please call for more information on availability, pricing, other sizes and dimensions.



Size (inch)	GFCP Part No.	GF Part No.	weight (lb)	A (inch)	B (inch)	Box Qty
3	ELI0390F1M	360 015 882	0.002			
4	10004135	360 000 274	3.616	3.00	6.86	10
6	10007785	360 000 043	7.848	4.64	9.18	2
10	10004116	360 000 045	35.803	6.00	13.25	1
12	10004125	360 000 046	53.991	7.50	15.88	1



Fabricated Elbows

Fabricated 45°, 2 Segment



FM FITTINGS: Fabricated 45° Elbow
PE3408/PE4710
IPS, DR7, Class 250, 2 Segment

- Approval: AWWA C906
 - Approval: NSF-61
 - Approval: FM 1613
- Please call for more information on availability, pricing, other sizes and dimensions.

Size (inch)	GFCP Part No.	GF Part No.	weight (lb)
6	ELI06452F2	360 015 954	9.656
8	ELI08452F2	360 015 999	18.298
10	ELI10452F2	360 016 038	29.321
12	ELI12452F2	360 016 076	50.927
14	ELI14452F2	360 016 112	56.527
16		360 032 012	164.002
18		360 032 013	199.011
20	ELI20452F2	360 016 218	141.801
24	ELI24452F2	360 016 286	197.689



FM FITTINGS: Fabricated 45° Elbow
PE3408/PE4710
DIPS, DR7, Class 250, 2 Segment

- Approval: AWWA C906
 - Approval: NSF-61
 - Approval: FM 1613
- Please call for more information on availability, pricing, other sizes and dimensions.

Size (inch)	GFCP Part No.	GF Part No.	weight (lb)
8	ELD08452F2	360 015 582	20.371
10	ELD10452F2	360 015 614	0.002
12	ELD12452F2	360 015 646	56.196
14	ELD14452F2	360 015 679	0.002
16	ELD16452F2	360 015 709	0.002



FM FITTINGS: Fabricated 45° Elbow
PE3408/PE4710
IPS, DR7, Class 335, 2 Segment

- Approval: AWWA C906
 - Approval: NSF-61
 - Approval: FM 1613
- Externally Reinforced
- Please call for more information on availability, pricing, other sizes and dimensions.

Size (inch)	GFCP Part No.	GF Part No.	weight (lb)
4		360 062 126	16.623
6	ELI06452F3	360 015 955	32.761
8	ELI08452F3	360 016 000	0.002
10	ELI10452F3	360 004 472	74.999
12	ELI12452F3	360 016 077	114.596

table continued on the next page



Size (inch)	GFCP Part No.	GF Part No.	weight (lb)
14	ELI14452F3	360 016 113	153.993
16	ELI16452F3	360 016 149	0.002
18	ELI18452F3	360 016 183	0.002
24	ELI24452F3	360 016 287	0.002



**FM FITTINGS: Fabricated 45° Elbow
PE3408/PE4710
IPS, DR9, Class 200, 2 Segment**

- Approval: AWWA C906
 - Approval: NSF-61
 - Approval: FM 1613
- Please call for more information on availability, pricing, other sizes and dimensions.

Size (inch)	GFCP Part No.	GF Part No.	weight (lb)
8	ELI08452F1	360 015 998	0.002
10	ELI10452F1	360 016 037	0.002
16	ELI16452F1	360 016 147	0.002
18	ELI18452F1	360 016 181	0.002
20	ELI20452F1	360 016 217	114.662



**FM FITTINGS: Fabricated 45° Elbow
PE3408/PE4710
DIPS, DR9, Class 200, 2 Segment**

- Approval: AWWA C906
 - Approval: NSF-61
 - Approval: FM 1613
- Please call for more information on availability, pricing, other sizes and dimensions.

Size (inch)	GFCP Part No.	GF Part No.	weight (lb)
6	ELD06452F1	360 015 549	0.002



**FM FITTINGS: Fabricated 45° Elbow
PE3408/PE4710
IPS, DR9, Class 250, 2 Segment**

- Approval: AWWA C906
 - Approval: NSF-61
 - Approval: FM 1613
- Please call for more information on availability, pricing, other sizes and dimensions.

Size (inch)	GFCP Part No.	GF Part No.	weight (lb)
18		360 032 064	189.400

Fabricated 45°, 3 Segment



**FM FITTINGS: Fabricated 45° Elbow
PE3408/PE4710
IPS, DR7, Class 250, 3 Segment**

- Approval: AWWA C906
 - Approval: NSF-61
 - Approval: FM 1613
- Please call for more information on availability, pricing, other sizes and dimensions.

Size (inch)	GFCP Part No.	GF Part No.	weight (lb)
6	ELI06453F2	360 015 957	0.002
8	ELI08453F2	360 016 002	0.002
10	ELI10453F2	360 016 040	39.066
12	ELI12453F2	360 016 079	56.218
14	ELI14453F2	360 016 115	80.998
16	ELI16452F2	360 016 148	90.191
16	ELI16453F2	360 016 151	0.002
18	ELI18452F2	360 016 182	0.002
18	ELI18453F2	360 016 185	0.002
20	ELI20453F2	360 016 221	202.010
24	ELI24453F2	360 016 289	0.002



**FM FITTINGS: Fabricated 45° Elbow
PE3408/PE4710
IPS, DR7, Class 335, 3 Segment
Externally Reinforced**

- Approval: AWWA C906
 - Approval: NSF-61
 - Approval: FM 1613
- Externally Reinforced
Please call for more information on availability, pricing, other sizes and dimensions.

Size (inch)	GFCP Part No.	GF Part No.	weight (lb)
6	ELI06453F3	360 015 958	0.002
8	ELI08453F3	360 016 003	0.002
10	ELI10453F3	360 016 041	0.002
12	ELI12453F3	360 016 080	0.002
14	ELI14453F3	360 016 116	0.002
16	ELI16453F3	360 016 152	0.002
20	ELI20453F3	360 016 222	0.002
24	ELI24453F3	360 016 290	0.002



**FM FITTINGS: Fabricated 45° Elbow
PE3408/PE4710
IPS, DR7, Class 335, 3 Segment**

- Approval: AWWA C906
 - Approval: NSF-61
 - Approval: FM 1613
- Please call for more information on availability, pricing, other sizes and dimensions.

Size (inch)	GFCP Part No.	GF Part No.	weight (lb)
24		360 031 958	0.000



FM FITTINGS: Fabricated 45° Elbow
PE3408/PE4710
IPS, DR9, Class 200, 3 Segment

- Approval: AWWA C906
 - Approval: NSF-61
 - Approval: FM 1613
- Please call for more information on availability, pricing, other sizes and dimensions.

Size (inch)	GFCP Part No.	GF Part No.	weight (lb)
10	ELI10453F1	360 016 039	0.002
14	ELI14453F1	360 016 114	0.002
18	ELI18453F1	360 016 184	118.410
24	ELI24453F1	360 016 288	0.002

Fabricated 90°, 2 Segment



FM FITTINGS: Fabricated 90° Elbow
PE3408/PE4710
IPS, DR9, Class 200, 2 Segment

- Approval: AWWA C906
 - Approval: NSF-61
 - Approval: FM 1613
- Please call for more information on availability, pricing, other sizes and dimensions.

Size (inch)	GFCP Part No.	GF Part No.	weight (lb)
6	ELI06903F1	360 015 973	0.002
8	ELI08903F1	360 016 016	0.002
10	ELI10903F1	360 016 053	0.002
16	ELI16903F1	360 016 161	0.002
18	ELI18903F1	360 016 195	0.002
20	ELI20903F1	360 016 231	0.002

Fabricated 90°, 3 Segment



FM FITTINGS: Fabricated 90° Elbow
PE3408/PE4710
IPS, DR7, Class 250, 3 Segment

- Approval: AWWA C906
 - Approval: NSF-61
 - Approval: FM 1613
- Please call for more information on availability, pricing, other sizes and dimensions.

Size (inch)	GFCP Part No.	GF Part No.	weight (lb)
8	ELI08903F2	360 016 017	27.866
10	ELI10903F2	360 016 054	49.847
12	ELI12903F2	360 016 091	82.409
12		360 061 364	174.430
14	ELI14903F2	360 016 127	100.002
16	ELI16903F2	360 016 162	144.601
18	ELI18903F2	360 016 196	0.002
20	ELI20903F2	360 016 232	243.258



**FM FITTINGS: Fabricated 90° Elbow
PE3408/PE4710
DIPS, DR7, Class 250, 3 Segment**

- Approval: AWWA C906
 - Approval: NSF-61
 - Approval: FM 1613
- Please call for more information on availability, pricing, other sizes and dimensions.

Size (inch)	GFCP Part No.	GF Part No.	weight (lb)
8	ELD08903F2	360 015 596	0.002
10	ELD10903F2	360 015 626	0.002
12	ELD12903F2	360 015 660	0.002
16	ELD16903F2	360 015 722	0.002



**FM FITTINGS: Fabricated 90° Elbow
PE3408/PE4710
IPS, DR7, Class 335, 3 Segment**

- Approval: AWWA C906
 - Approval: NSF-61
 - Approval: FM 1613
- Externally Reinforced
Please call for more information on availability, pricing, other sizes and dimensions.

Size (inch)	GFCP Part No.	GF Part No.	weight (lb)
4	ELI04903F3	360 004 467	37.000
6	ELI06903F3	360 004 468	47.995
8	ELI08903F3	360 004 469	81.593
10	ELI10903F3	360 004 470	130.800
12	ELI12903F3	360 016 092	247.403
14	ELI14903F3	360 016 128	224.012
16	ELI16903F3	360 016 163	0.002
18	ELI18903F3	360 016 197	0.002



**FM FITTINGS: Fabricated 90° Elbow
PE3408/PE4710
IPS, DR9, Class 200, 3 Segment**

- Approval: AWWA C906
 - Approval: NSF-61
 - Approval: FM 1613
- Please call for more information on availability, pricing, other sizes and dimensions.

Size (inch)	GFCP Part No.	GF Part No.	weight (lb)
24	ELI24903F1	360 016 299	0.002



FM FITTINGS: Fabricated 90° Elbow
PE3408/PE4710
IPS, DR9, Class 250, 3 Segment

- Approval: AWWA C906
 - Approval: NSF-61
 - Approval: FM 1613
- Please call for more information on availability, pricing, other sizes and dimensions.

Size (inch)	GFCP Part No.	GF Part No.	weight (lb)
14		360 032 009	178.001
16		360 032 010	244.008
18		360 032 011	318.414

Fabricated 90°, 5 Segment



FM FITTINGS: Fabricated 90° Elbow
PE3408/PE4710
IPS, DR7, Class 250, 5 Segment

- Approval: AWWA C906
 - Approval: NSF-61
 - Approval: FM 1613
- Please call for more information on availability, pricing, other sizes and dimensions.

Size (inch)	GFCP Part No.	GF Part No.	weight (lb)
6	ELI06905F2	360 015 976	21.297
8	ELI08905F2	360 016 019	39.375
10	ELI10905F2	360 016 056	63.890
12	ELI12905F2	360 016 094	0.002
16	ELI16905F2	360 016 165	0.002
20	ELI20905F2	360 016 235	346.016
24	ELI24905F2	360 016 303	545.776



FM FITTINGS: Fabricated 90° Elbow
PE3408/PE4710
DIPS, DR7, Class 250, 5 Segment

- Approval: AWWA C906
 - Approval: NSF-61
 - Approval: FM 1613
- Please call for more information on availability, pricing, other sizes and dimensions.

Size (inch)	GFCP Part No.	GF Part No.	weight (lb)
10	ELD10905F2	360 015 628	0.002



FM FITTINGS: Fabricated 90° Elbow
PE3408/PE4710
IPS, DR7, Class 335, 5 Segment

- Approval: AWWA C906
 - Approval: NSF-61
 - Approval: FM 1613
- Externally Reinforced
Please call for more information on availability, pricing, other sizes and dimensions.

Size (inch)	GFCP Part No.	GF Part No.	weight (lb)
6	ELI06905F3	360 015 977	0.002
8	ELI08905F3	360 016 020	0.002
10	ELI10905F3	360 028 483	0.022

table continued on the next page



Size (inch)	GFCP Part No.	GF Part No.	weight (lb)
12	ELI12905F3	360 016 095	0.002
14	ELI14905F3	360 016 131	130.999
16	ELI16905F3	360 016 166	0.002
20	ELI20905F3	360 028 680	0.022
24	ELI24905F3	360 016 304	545.997
24		360 031 959	0.000



**FM FITTINGS: Fabricated 90° Elbow
PE3408/PE4710
IPS, DR9, Class 200, 5 Segment**

- Approval: AWWA C906
- Approval: NSF-61
- Approval: FM 1613

Please call for more information on availability, pricing, other sizes and dimensions.

Size (inch)	GFCP Part No.	GF Part No.	weight (lb)
8	ELI08905F1	360 016 018	31.857
10	ELI10905F1	360 016 055	0.002
12	ELI12905F1	360 016 093	83.467
14	ELI14905F1	360 016 129	102.008
18	ELI18905F1	360 016 198	204.699
24	ELI24905F1	360 016 302	0.002

Fabricated 22.5°, 2 Segment



**FM FITTINGS: Fabricated 22.5° Elbow
PE3408/PE4710
IPS, DR7, Class 250, 2 Segment**

- Approval: AWWA C906
- Approval: NSF-61
- Approval: FM 1613

Please call for more information on availability, pricing, other sizes and dimensions.

Size (inch)	GFCP Part No.	GF Part No.	weight (lb)
6	ELI06222F2	360 015 941	0.002
8	ELI08222F2	360 015 985	0.002
12	ELI12222F2	360 016 062	46.010
14	ELI14222F2	360 016 102	51.169



**FM FITTINGS: Fabricated 22.5° Elbow
PE3408/PE4710
IPS, DR7, Class 335, 2 Segment**

- Approval: AWWA C906
- Approval: NSF-61
- Approval: FM 1613

Please call for more information on availability, pricing, other sizes and dimensions.

Size (inch)	GFCP Part No.	GF Part No.	weight (lb)
16	ELI16222F3	360 016 138	0.002
24	ELI24222F3	360 016 276	0.002
24		360 031 957	0.000
10		360 061 361	71.880



FM FITTINGS: Fabricated 22.5° Elbow
PE3408/PE4710
IPS, DR9, Class 200, 2 Segment

- Approval: AWWA C906
- Approval: NSF-61
- Approval: FM 1613

Please call for more information on availability, pricing, other sizes and dimensions.

Size (inch)	GFCP Part No.	GF weight Part No.	weight (lb)
12	ELI12222F1		0.002
18	ELI18222F1	360 016 171	0.002

Waterstops



FM THRUST RESTRAINTS: Waterstop
PE3408/PE4710
IPS, DR7, Class 335

- Approval: ASTM D3261
 - Approval: AWWA C906
 - Approval: NSF-61
- Please call for more information on availability, pricing, other sizes and dimensions.

Size (inch)	GFCP Part No.	GF Part No.	weight (lb)
4	WSI0400FM3	360 019 633	0.002
6	WSI0600FM3	360 019 640	0.002
8	WSI0800FM3	360 019 647	0.002



FM THRUST RESTRAINTS: Waterstop
PE3408/PE4710
IPS, DR9, Class 250

- Approval: ASTM D3261
 - Approval: AWWA C906
 - Approval: NSF-61
- Please call for more information on availability, pricing, other sizes and dimensions.

Size (inch)	GFCP Part No.	GF Part No.	weight (lb)
8	WSI0800FM2	360 019 646	0.002
10	WSI1000FM2	360 019 652	0.002
12	WSI1200FM2	360 019 658	0.002
14	WSI1400FM2	360 019 664	0.002
16	WSI1600FM2	360 019 670	0.002

Adapters & Bolt Rings

Table of contents

MJ Adapters	26
Flange Adapters	31
Flange Adapter Bolt Rings	33

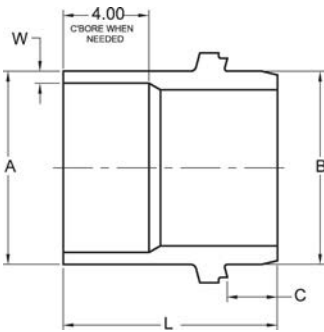
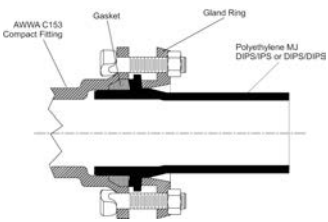
MJ Adapters



FM ADAPTERS: MJ Adapter PE3408/PE4710 IPS, DR7, Class 335

Please call for more information on availability, pricing, other sizes and dimensions.

Size (inch)	GF Part No.	weight (lb)	A (inch)	B (inch)	C (inch)	L (inch)	W
6	360 032 213	7.500	6.625	6.900	2.34	11.31	DR9 - DR17
8	360 032 215	14.980	8.625	9.050	2.34	11.94	DR9 - DR17
10	360 032 214	21.130	10.750	11.100	2.34	13.56	DR9 - DR17
12	360 032 059	0.000	12.750	13.200	2.00	13.00	DR9 - DR17
14	360 032 216	55.410	14.000	15.300	1.34	13.00	DR9 - DR17
16	360 028 591	0.022					



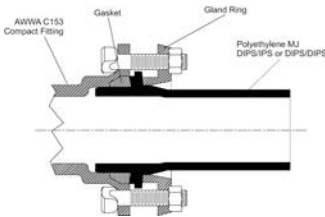
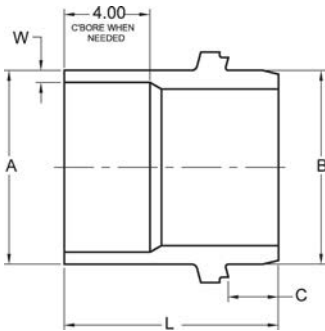


FM ADAPTERS: MJ Adapter
PE3408/PE4710
IPS, DR9, Class 250

Please call for more information on availability, pricing, other sizes and dimensions.



Size (inch)	GFCP Part No.	GF Part No.	weight (lb)	A (inch)	B (inch)	C (inch)	L (inch)	W
3	MJI0300FM2	360 017 719	0.002					
4	MJI0400FM2	360 017 730	0.002	4.500	4.800	2.34	10.25	DR9 - DR17
6	MJI0600FM2	360 017 741	7.209	6.625	6.900	2.34	11.31	DR9 - DR17
8	MJI0800FM2	360 017 752	12.170	8.625	9.050	2.34	11.94	DR9 - DR17
16	MJI1600FM2	360 017 794	54.101	16.000	17.400	1.34	13.00	DR9 - DR17
10	MJI1000FM2	360 017 764	21.341	10.750	11.100	2.34	13.56	DR9 - DR17
12	MJI1200FM2	360 017 777	31.041	12.750	13.200	2.00	13.00	DR9 - DR17
14	MJI1400FM2	360 017 786	0.002					
18	MJI1800FM2	360 017 802	0.002					



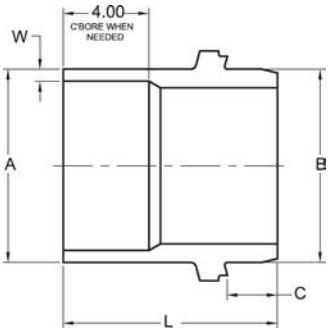
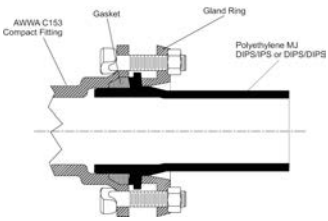


FM ADAPTERS: MJ Adapter
PE3408/PE4710
DIPS, DR9, Class 250

Please call for more information on availability, pricing, other sizes and dimensions.



Size (inch)	GFCP Part No.	GF Part No.	weight (lb)	A (inch)	B (inch)	C (inch)	L (inch)	W	Box Qty
4	MJD0400FM2	360 017 600	3.109						
6	MJD0600FM2	360 017 611	7.628	6.90	6.90	2.34	11.31	DR9 - DR17	4
8	MJD0800FM2	360 017 623	12.588	9.05	9.05	2.75	14.00	DR9 - DR17	3
12	MJD1200FM2	360 017 647	29.454	13.20	13.20	2.00	13.00	DR9 - DR17	1
14	MJD1400FM2	360 017 657	42.130	15.30	15.30	1.34	13.00	DR9 - DR17	1
16	MJD1600FM2	360 017 667	0.002						



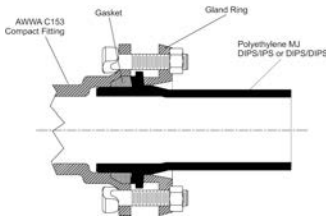
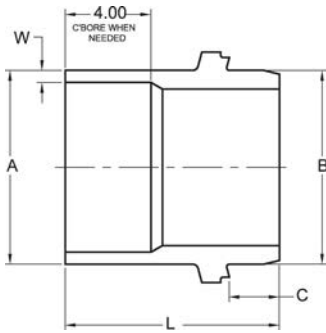


FM ADAPTERS: MJ Adapter
PE3408/PE4710
IPS, DR11, Class 200

Please call for more information on availability, pricing, other sizes and dimensions.



Size (inch)	GFCP Part No.	GF Part No.	weight (lb)	A (inch)	B (inch)	C (inch)	L (inch)	W
4	10009623	360 003 464	2.822	4.500	4.800	2.34	10.25	DR9 - DR17
6	MJI0600FM1	360 017 740	0.002					
8	MJI0800FM1	360 017 751	0.002					
10	MJI1000FM1	360 017 763	0.002					
12	MJI1200FM1	360 017 776	0.002					
14	MJI1400FM1	360 017 785	0.002					
16	MJI1600FM1	360 017 793	0.002					

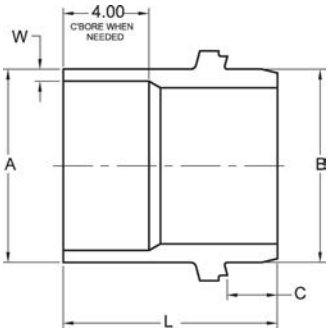
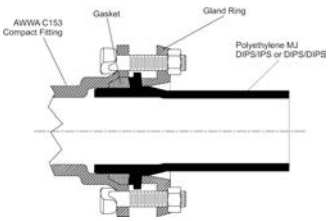




FM ADAPTERS: MJ Adapter
PE3408/PE4710
DIPS, DR11, Class 200

Please call for more information on availability, pricing, other sizes and dimensions.

Size (inch)	GFCP Part No.	GF Part No.	weight (lb)
10	MJD1000FM1	360 017 632	0.002
12	MJD1200FM1	360 017 646	0.002
14	MJD1400FM1	360 017 656	37.170
16	MJD1600FM1	360 017 666	0.002
18	MJD1800FM1	360 017 675	68.101



Flange Adapters



FM ADAPTERS: Flange Adapter PE3408/PE4710 IPS, DR7, Class 335

- Approval: ASTM D3261
- Approval: AWWA C906
- Approval: NSF-61

Please call for more information on availability, pricing, other sizes and dimensions.



Size (inch)	GFCP Part No.	GF Part No.	weight (lb)	A (inch)	B (inch)	L (inch)	Box Qty
4	FAI0400FM3	360 004 462	3.000	6.00	7.50	5.80	2
6	FAI0600FM3	360 004 463	7.000	8.50	1.00	8.00	3
8	FAI0800FM3	360 004 464	10.000	10.56	1.57	9.00	4
10	FAI1000FM3	360 004 465	21.495	12.75	1.28	12.00	2
12	FAI1200FM3	360 016 752	30.666	15.00	1.54	12.00	1
14	FAI1400FM3	360 016 761	40.455	17.50	1.50	12.00	1
16	FAI1600FM3	360 016 771	58.092	20.00	1.75	12.00	1
18	FAI1800FM3	360 016 779	69.049	21.38	1.88	12.00	1
20	FAI2000FM3	360 016 789	96.717	23.47	2.27	12.00	1
24	FAI2400FM3	360 016 808	160.673	27.85	2.82	12.00	1



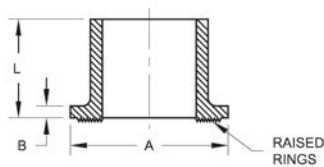
FM ADAPTERS: Flange Adapter PE3408/PE4710 IPS, DR9, Class 250

- Approval: ASTM D2513
- Approval: ASTM D3261
- Approval: AWWA C906
- Approval: FM 1613

Please call for more information on availability, pricing, other sizes and dimensions.



Size (inch)	GFCP Part No.	GF Part No.	weight (lb)	A (inch)	B (inch)	L (inch)	Box Qty
2	FAI0200FM2	360 016 699	0.463				
3	FAI0300FM2	360 016 706	1.049				
4	10003642	360 001 562	1.742	6.00	0.54	6.00	8
6	6912377	360 001 582	5.247	8.50	0.78	8.00	2
8	6912378	360 001 600	10.185	10.63	1.00	11.00	2
8	10004491	360 001 601	9.789	10.63	1.00	11.00	2
14	FAI1400FM2	360 016 760	32.161	17.50	1.50	12.00	1
16	FAI1600FM2	360 016 770	46.782	20.00	1.75	12.00	1
18	FAI1800FM2	360 016 778	55.094	21.38	1.88	12.00	1
18		360 032 062	49.650				
20	FAI2000FM2	360 016 788	69.997	23.47	2.77	12.00	1
24	FAI2400FM2	360 016 807	122.002	27.85	2.82	12.00	1



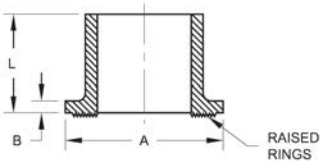


FM ADAPTERS: Flange Adapter
PE3408/PE4710
DIPS, DR9, Class 250

- Approval: ASTM D2513
 - Approval: ASTM D3261
 - Approval: AWWA C906
 - Approval: FM 1613
- Please call for more information on availability, pricing, other sizes and dimensions.



Size (inch)	GFCP Part No.	GF Part No.	weight (lb)
4	FAD0400FM2	360 016 612	2.072
10	FAD1000FM2	360 016 630	0.002
14	FAD1400FM2	360 016 644	0.002

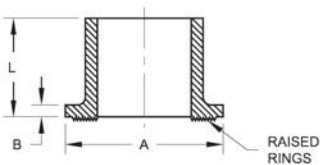


FM ADAPTERS: Flange Adapter
PE3408/PE4710
IPS, DR11, Class 200

- Approval: ASTM D2513
 - Approval: ASTM D3261
 - Approval: AWWA C906
 - Approval: NSF-61
 - Approval: FM 1613
- Please call for more information on availability, pricing, other sizes and dimensions.



Size (inch)	GFCP Part No.	GF Part No.	weight (lb)	A (inch)	B (inch)	L (inch)	Box Qty
2	FAI0200FM1	360 016 698	0.463				
3	FAI0300FM1	360 016 705	0.926				
6	6912105	360 000 057	4.431	8.50	1.00	8.00	
8	6912124	360 000 058	10.197	10.63	1.00	11.00	
10	10004326	360 003 451	16.094	12.75	1.28	12.00	2
12	6912126	360 001 440	21.142	15.00	1.54	12.00	2
14	10004354	360 001 453	29.696	17.50	1.50	12.00	1
16	10004369	360 001 469	38.008	20.00	1.75	12.00	1
18	10003683	360 001 482	33.995	21.38	1.88	12.00	1
20	FAI2000FM1	360 016 787	61.619	23.47	2.27	12.00	1
22	FAI2200FM1	360 016 795	0.002				
24	FAI2400FM1	360 016 806	98.002	27.85	2.82	12.00	1



Flange Adapter Bolt Rings

Ductile Iron



FM FLANGE ADAPTERS: Bolt Ring IPS Ductile Iron, Class 200

- Approval: ASTM A536
- Approval: GR 65/45/12
- Approval: FM 1613

Please call for more information on availability, pricing, other sizes and dimensions.

Size (inch)	GFCP Part No.	GF Part No.	weight (lb)
2	BRID020FM1	360 014 826	0.002
3	BRID030FM1	360 014 830	0.002
4	BRID040FM1	360 014 834	0.002
6	BRID060FM1	360 014 838	0.002
8	BRID080FM1	360 014 841	0.002
10	BRID100FM1	360 014 844	0.002
12	BRID120FM1	360 014 848	0.002
14	BRID140FM1	360 014 853	0.002
16	BRID160FM1	360 014 858	0.002
18	BRID180FM1	360 014 863	0.002
20	BRID200FM1	360 014 871	0.002
22	BRID220FM1	360 014 875	0.002
26	BRID260FM1	360 014 884	0.002
24	BRID240FM1	360 014 880	0.002
28	BRID280FM1	360 014 887	0.002
30	BRID300FM1	360 014 891	0.002
32	BRID320FM1	360 014 894	0.002
34	BRID340FM1	360 014 896	0.002



FM FLANGE ADAPTERS: Bolt Ring DIPS Ductile Iron, Class 200

- Approval: ASTM A536
- Approval: GR 65/45/12
- Approval: FM 1613

Please call for more information on availability, pricing, other sizes and dimensions.

Size (inch)	GFCP Part No.	GF Part No.	weight (lb)
4	BRDD040FM1	360 014 655	0.002
6	BRDD060FM1	360 014 659	0.002
8	BRDD080FM1	360 014 663	0.002
10	BRDD100FM1	360 014 667	0.002
12	BRDD120FM1	360 014 671	0.002
14	BRDD140FM1	360 014 675	0.002
16	BRDD160FM1	360 014 679	0.002
18	BRDD180FM1	360 014 683	0.002
20	BRDD200FM1	360 014 687	0.002
24	BRDD240FM1	360 014 691	0.002



FM FLANGE ADAPTERS: Bolt Ring
IPS Ductile Iron, Class 250

- Approval: ASTM A536
- Approval: GR 65/45/12
- Approval: FM 1613

Please call for more information on availability, pricing, other sizes and dimensions.

Size (inch)	GFCP Part No.	GF Part No.	weight (lb)
2	BRID020FM2	360 014 827	0.002
3	BRID030FM2	360 014 831	0.002
4	BRID040FM2	360 014 835	0.002
6	BRID060FM2	360 014 839	0.002
8	BRID080FM2	360 014 842	0.002
10	BRID100FM2	360 014 845	0.002
12	BRID120FM2	360 014 849	0.002
14	BRID140FM2	360 014 854	0.002
16	BRID160FM2	360 014 859	0.002
18	BRID180FM2	360 014 864	0.002
20	BRID200FM2	360 014 872	0.002
22	BRID220FM2	360 014 876	0.002
24	BRID240FM2	360 014 881	0.002
26	BRID260FM2	360 014 885	0.002
28	BRID280FM2	360 014 888	0.002
30	BRID300FM2	360 014 892	0.002



FM FLANGE ADAPTERS: Bolt Ring
DIPS Ductile Iron, Class 250

- Approval: ASTM A536
- Approval: GR 65/45/12
- Approval: FM 1613

Please call for more information on availability, pricing, other sizes and dimensions.

Size (inch)	Part No.	Part No.	weight (lb)
4	BRDD040FM2	360 014 656	0.002
6	BRDD060FM2	360 014 660	0.002
8	BRDD080FM2	360 014 664	0.002
10	BRDD100FM2	360 014 668	0.002
12	BRDD120FM2	360 014 672	0.002
14	BRDD140FM2	360 014 676	0.002
16	BRDD160FM2	360 014 680	0.002
18	BRDD180FM2	360 014 684	0.002
20	BRDD200FM2	360 014 688	0.002
24	BRDD240FM2	360 014 692	0.002



FM FLANGE ADAPTERS: Bolt Ring
IPS Ductile Iron, Class 335

- Approval: ASTM A536
 - Approval: GR 65/45/12
 - Approval: FM 1613
- Please call for more information on availability, pricing, other sizes and dimensions.

Size (inch)	GFCP Part No.	GF Part No.	weight (lb)
2	BRID020FM3	360 014 828	0.002
3	BRID030FM3	360 014 832	0.002
4	BRID040FM3	360 004 478	6.001
6	BRID060FM3	360 014 837	8.001
8	BRID080FM3	360 014 840	12.000
10	BRID100FM3	360 014 843	15.000
12	BRID120FM3	360 014 847	0.002
14	BRID140FM3	360 014 855	0.002
16	BRID160FM3	360 014 860	0.002
18	BRID180FM3	360 014 865	0.002
20	BRID200FM3	360 014 873	0.002
22	BRID220FM3	360 014 877	0.002
24	BRID240FM3	360 014 882	0.002



FM FLANGE ADAPTERS: Bolt Ring
DIPS Ductile Iron, Class 335

- Approval: ASTM A536
 - Approval: GR 65/45/12
 - Approval: FM 1613
- Please call for more information on availability, pricing, other sizes and dimensions.

Size (inch)	GFCP Part No.	GF Part No.	weight (lb)
4	BRDD040FM3	360 014 657	0.002
6	BRDD060FM3	360 014 661	0.002
8	BRDD080FM3	360 014 665	0.002
10	BRDD100FM3	360 014 669	0.002
12	BRDD120FM3	360 014 673	0.002
14	BRDD140FM3	360 014 677	0.002
16	BRDD160FM3	360 014 681	0.002
18	BRDD180FM3	360 014 685	0.002
20	BRDD200FM3	360 014 689	0.002
24	BRDD240FM3	360 014 693	0.002

Epoxy Coated



FM FLANGE ADAPTERS: Bolt Ring IPS Epoxy Coated, Class 200

- Approval: ASTM A536
 - Approval: GR 65/45/12
 - Approval: FM 1613
- Please call for more information on availability, pricing, other sizes and dimensions.

Size (inch)	GFCP Part No.	GF Part No.	weight (lb)
2	BRIE020FM1	360 014 909	0.002
3	BRIE030FM1	360 014 913	0.002
6	BRIE060FM1	360 014 922	0.002
8	BRIE080FM1	360 014 926	0.002
10	BRIE100FM1	360 014 930	0.002
12	BRIE120FM1	360 014 935	0.002
14	BRIE140FM1	360 014 940	0.002
16	BRIE160FM1	360 014 945	0.002
18	BRIE180FM1	360 014 950	0.002
20	BRIE200FM1	360 014 955	0.002
22	BRIE220FM1	360 014 959	0.002
24	BRIE240FM1	360 014 964	0.002
26	BRIE260FM1	360 014 968	0.002
28	BRIE280FM1	360 014 971	0.002
30	BRIE300FM1	360 014 975	0.002
32	BRIE320FM1	360 014 978	0.002
34	BRIE340FM1	360 014 980	0.002
36	BRIE360FM1	360 014 983	0.002



FM FLANGE ADAPTERS: Bolt Ring DIPS Epoxy Coated, Class 200

- Approval: ASTM A536
 - Approval: GR 65/45/12
 - Approval: FM 1613
- Please call for more information on availability, pricing, other sizes and dimensions.

Size (inch)	GFCP Part No.	GF Part No.	weight (lb)
4	BRDE040FM1	360 014 697	0.002
6	BRDE060FM1	360 014 701	0.002
8	BRDE080FM1	360 014 705	0.002
10	BRDE100FM1	360 014 709	0.002
12	BRDE120FM1	360 014 713	0.002
14	BRDE140FM1	360 014 717	0.002
16	BRDE160FM1	360 014 721	0.002
18	BRDE180FM1	360 014 725	0.002
20	BRDE200FM1	360 014 729	0.002
24	BRDE240FM1	360 014 733	0.002



FM FLANGE ADAPTERS: Bolt Ring
IPS Epoxy Coated, Class 250

- Approval: ASTM A536
 - Approval: GR 65/45/12
 - Approval: FM 1613
- Please call for more information on availability, pricing, other sizes and dimensions.

Size (inch)	GFCP Part No.	GF Part No.	weight (lb)
2	BRIE020FM2	360 014 910	0.002
3	BRIE030FM2	360 014 914	0.002
4	BRIE040FM2	360 014 918	0.002
6	BRIE060FM2	360 014 923	0.002
8	BRIE080FM2	360 014 927	0.002
10	BRIE100FM2	360 014 931	0.002
12	BRIE120FM2	360 014 936	0.002
14	BRIE140FM2	360 014 941	0.002
16	BRIE160FM2	360 014 946	0.002
18	BRIE180FM2	360 014 951	0.002
20	BRIE200FM2	360 014 956	0.002
22	BRIE220FM2	360 014 960	0.002
24	BRIE240FM2	360 014 965	0.002
26	BRIE260FM2	360 014 969	0.220
28	BRIE280FM2	360 014 972	0.002
30	BRIE300FM2	360 014 976	0.002



FM FLANGE ADAPTERS: Bolt Ring
DIPS Epoxy Coated, Class 250

- Approval: ASTM A536
 - Approval: GR 65/45/12
 - Approval: FM 1613
- Please call for more information on availability, pricing, other sizes and dimensions.

Size (inch)	GFCP Part No.	GF Part No.	weight (lb)
4	BRDE040FM2	360 014 698	0.002
6	BRDE060FM2	360 014 702	0.002
8	BRDE080FM2	360 014 706	0.002
10	BRDE100FM2	360 014 710	0.002
12	BRDE120FM2	360 014 714	0.002
14	BRDE140FM2	360 014 718	0.002
16	BRDE160FM2	360 014 722	0.002
18	BRDE180FM2	360 014 726	0.002
20	BRDE200FM2	360 014 730	0.002
24	BRDE240FM2	360 014 734	0.002



FM FLANGE ADAPTERS: Bolt Ring
IPS Epoxy Coated, Class 335

- Approval: ASTM A536
 - Approval: GR 65/45/12
 - Approval: FM 1613
- Please call for more information on availability, pricing, other sizes and dimensions.

Size (inch)	GFCP Part No.	GF Part No.	weight (lb)
2	BRIE020FM3	360 014 911	0.002
3	BRIE030FM3	360 014 915	0.002
4	BRIE040FM3	360 014 919	0.002
6	BRIE060FM3	360 014 924	0.002
8	BRIE080FM3	360 014 928	0.002
10	BRIE100FM3	360 014 932	0.002
12	BRIE120FM3	360 014 937	0.002
14	BRIE140FM3	360 014 942	0.002
16	BRIE160FM3	360 014 947	0.002
18	BRIE180FM3	360 014 952	0.002
20	BRIE200FM3	360 014 957	0.002
22	BRIE220FM3	360 014 961	0.002
24	BRIE240FM3	360 014 966	0.002



FM FLANGE ADAPTERS: Bolt Ring
DIPS Epoxy Coated, Class 335

- Approval: ASTM A536
 - Approval: GR 65/45/12
 - Approval: FM 1613
- Please call for more information on availability, pricing, other sizes and dimensions.

Size (inch)	GFCP Part No.	GF Part No.	weight (lb)
4	BRDE040275	360 014 696	4.850
6	BRDE060275	360 014 700	7.280
8	BRDE080275	360 014 704	10.360
10	BRDE100275	360 014 708	15.432
12	BRDE120275	360 014 712	25.130
14	BRDE140275	360 014 716	30.422
16	BRDE160275	360 014 720	41.890
18	BRDE180275	360 014 724	50.261
20	BRDE200275	360 014 728	60.852
24	BRDE240275	360 014 732	93.031

Galvanized



FM FLANGE ADAPTERS: Bolt Ring IPS Galvanized, Class 200

- Approval: ASTM A536
 - Approval: GR 65/45/12
 - Approval: FM 1613
- Please call for more information on availability, pricing, other sizes and dimensions.

Size (inch)	GFCP Part No.	GF Part No.	weight (lb)
2	BRIG020FM1	360 014 992	0.002
3	BRIG030FM1	360 014 996	0.002
4	BRIG040FM1	360 015 000	0.002
6	BRIG060FM1	360 015 005	0.002
8	BRIG080FM1	360 015 009	0.002
10	BRIG100FM1	360 015 013	0.002
12	BRIG120FM1	360 015 018	0.002
14	BRIG140FM1	360 015 023	0.002
16	BRIG160FM1	360 015 028	0.002
18	BRIG180FM1	360 015 033	0.002
20	BRIG200FM1	360 015 038	0.002
22	BRIG220FM1	360 015 042	0.002
24	BRIG240FM1	360 015 047	0.002
26	BRIG260FM1	360 015 051	0.002
30	BRIG300FM1	360 015 058	0.002
32	BRIG320FM1	360 015 061	0.002
34	BRIG340FM1	360 015 063	0.002



FM FLANGE ADAPTERS: Bolt Ring DIPS Galvanized, Class 200

- Approval: ASTM A536
 - Approval: GR 65/45/12
 - Approval: FM 1613
- Please call for more information on availability, pricing, other sizes and dimensions.

Size (inch)	GFCP Part No.	GF Part No.	weight (lb)
4	BRDG040FM1	360 014 738	0.002
6	BRDG060FM1	360 014 742	0.002
8	BRDG080FM1	360 014 746	0.002



**FM FLANGE ADAPTERS: Bolt Ring
IPS Galvanized, Class 250**

- Approval: ASTM A536
 - Approval: GR 65/45/12
 - Approval: FM 1613
- Please call for more information on availability, pricing, other sizes and dimensions.

Size (inch)	GFCP Part No.	GF Part No.	weight (lb)
2	BRIG020FM2	360 014 993	0.002
3	BRIG030FM2	360 014 997	0.002
4	BRIG040FM2	360 015 001	0.002
6	BRIG060FM2	360 015 006	0.002
8	BRIG080FM2	360 015 010	0.002
10	BRIG100FM2	360 015 014	0.002
12	BRIG120FM2	360 015 019	0.002
14	BRIG140FM2	360 015 024	0.002
16	BRIG160FM2	360 015 029	0.002
18	BRIG180FM2	360 015 034	0.002
20	BRIG200FM2	360 015 039	0.002
22	BRIG220FM2	360 015 043	0.002
24	BRIG240FM2	360 015 048	0.002
26	BRIG260FM2	360 015 052	0.002
28	BRIG280FM2	360 015 055	0.002
30	BRIG300FM2	360 015 059	0.002



**FM FLANGE ADAPTERS: Bolt Ring
DIPS Galvanized, Class 250**

- Approval: ASTM A351-CF8M
 - Approval: FM 1613
- Please call for more information on availability, pricing, other sizes and dimensions.

Size (inch)	GFCP Part No.	GF Part No.	weight (lb)
4	BRDG040FM2	360 014 739	0.002
6	BRDG060FM2	360 014 743	0.002
8	BRDG080FM2	360 014 747	0.002



FM FLANGE ADAPTERS: Bolt Ring
IPS Galvanized, Class 335

- Approval: ASTM A536
 - Approval: GR 65/45/12
 - Approval: FM 1613
- Please call for more information on availability, pricing, other sizes and dimensions.

Size (inch)	GFCP Part No.	GF Part No.	weight (lb)
2	BRIG020FM3	360 014 994	0.002
3	BRIG030FM3	360 014 998	0.002
4	BRIG040FM3	360 015 002	0.002
6	BRIG060FM3	360 015 007	0.002
8	BRIG080FM3	360 015 011	0.002
10	BRIG100FM3	360 015 015	0.002
12	BRIG120FM3	360 015 020	0.002
14	BRIG140FM3	360 015 025	0.002
16	BRIG160FM3	360 015 030	0.002
18	BRIG180FM3	360 015 035	0.002
20	BRIG200FM3	360 015 040	0.002
22	BRIG220FM3	360 015 044	0.002
24	BRIG240FM3	360 015 049	0.002



FM FLANGE ADAPTERS: Bolt Ring
DIPS Galvanized, Class 3354

- Approval: ASTM A536
 - Approval: GR 65/45/12
 - Approval: FM 1613
- Please call for more information on availability, pricing, other sizes and dimensions.

Size (inch)	GFCP Part No.	GF Part No.	weight (lb)
4	BRDG040FM3	360 014 740	0.002
6	BRDG060FM3	360 014 744	0.002
8	BRDG080FM3	360 014 748	0.002
10	BRDG100FM3	360 014 752	0.002
12	BRDG120FM3	360 014 756	0.002
14	BRDG140FM3	360 014 760	0.002
16	BRDG160FM3	360 014 764	0.002
18	BRDG180FM3	360 014 768	0.002
20	BRDG200FM3	360 014 772	0.002
24	BRDG240275	360 014 773	93.031

Stainless Steel



FM FLANGE ADAPTERS: Bolt Ring IPS Stainless, Class 200

- Approval: ASTM A351-CF8M
 - Approval: FM 1613
- Please call for more information on availability, pricing, other sizes and dimensions.

Size (inch)	GFCP Part No.	GF Part No.	weight (lb)
2	BRIS020FM1	360 015 075	0.002
3	BRIS030FM1	360 015 079	0.002
4	BRIS040FM1	360 015 083	0.002
6	BRIS060FM1	360 015 088	0.002
8	BRIS080FM1	360 015 092	0.002
10	BRIS100FM1	360 015 096	0.002
12	BRIS120FM1	360 015 100	0.002
14	BRIS140FM1	360 015 104	0.002
16	BRIS160FM1	360 015 108	0.002
18	BRIS180FM1	360 015 112	0.002
20	BRIS200FM1	360 015 116	0.002
22	BRIS220FM1	360 015 120	0.002
24	BRIS240FM1	360 015 124	0.002
26	BRIS260FM1	360 015 128	0.002
28	BRIS280FM1	360 015 131	0.002
30	BRIS300FM1	360 015 134	0.002
32	BRIS320FM1	360 015 137	0.002
34	BRIS340FM1	360 015 139	0.002
36	BRIS360FM1	360 015 142	0.002



FM FLANGE ADAPTERS: Bolt Ring DIPS Stainless, Class 200

- Approval: ASTM A351-CF8M
 - Approval: FM 1613
- Please call for more information on availability, pricing, other sizes and dimensions.

Size (inch)	GFCP Part No.	GF Part No.	weight (lb)
4	BRDS040FM1	360 014 780	0.002
6	BRDS060FM1	360 014 784	0.002
8	BRDS080FM1	360 014 788	0.002
10	BRDS100FM1	360 014 792	0.002
12	BRDS120FM1	360 014 796	0.002
14	BRDS140FM1	360 014 800	0.002
16	BRDS160FM1	360 014 804	0.002
18	BRDS180FM1	360 014 808	0.002
20	BRDS200FM1	360 014 812	0.002
24	BRDS240FM1	360 014 816	0.002



**FM FLANGE ADAPTERS: Bolt Ring
IPS Stainless, Class 250**

- Approval: ASTM A351-CF8M
 - Approval: FM 1613
- Please call for more information on availability, pricing, other sizes and dimensions.

Size (inch)	GFCP Part No.	GF Part No.	weight (lb)
2	BRIS020FM2	360 015 076	0.002
3	BRIS030FM2	360 015 080	0.002
4	BRIS040FM2	360 015 084	0.002
6	BRIS060FM2	360 015 089	0.002
8	BRIS080FM2	360 015 093	0.002
10	BRIS100FM2	360 015 097	0.002
12	BRIS120FM2	360 015 101	0.002
14	BRIS140FM2	360 015 105	0.002
16	BRIS160FM2	360 015 109	0.002
18	BRIS180FM2	360 015 113	0.002
20	BRIS200FM2	360 015 117	0.002
22	BRIS220FM2	360 015 121	0.002
24	BRIS240FM2	360 015 125	0.002
26	BRIS260FM2	360 015 129	0.002
28	BRIS280FM2	360 015 132	0.002
30	BRIS300FM2	360 015 135	0.002



**FM FLANGE ADAPTERS: Bolt Ring
DIPS Stainless, Class 250**

- Approval: ASTM A351-CF8M
 - Approval: FM 1613
- Please call for more information on availability, pricing, other sizes and dimensions.

Size (inch)	GFCP Part No.	GF Part No.	weight (lb)
4	BRDS040FM2	360 014 781	0.002
6	BRDS060FM2	360 014 785	0.002
8	BRDS080FM2	360 014 789	0.002
10	BRDS100FM2	360 014 793	0.002
12	BRDS120FM2	360 014 797	0.002
14	BRDS140FM2	360 014 801	0.002
16	BRDS160FM2	360 014 805	0.002
18	BRDS180FM2	360 014 809	0.002
20	BRDS200FM2	360 014 813	0.002
24	BRDS240FM2	360 014 817	0.002



FM FLANGE ADAPTERS: Bolt Ring
IPS Stainless, Class 335

- Approval: ASTM A351-CF8M
 - Approval: FM 1613
- Please call for more information on availability, pricing, other sizes and dimensions.

Size (inch)	GFCP Part No.	GF Part No.	weight (lb)
2	BRIS020FM3	360 015 077	0.002
3	BRIS030FM3	360 015 081	0.002
4	BRIS040FM3	360 015 085	0.002
6	BRIS060FM3	360 015 090	0.002
8	BRIS080FM3	360 015 094	0.002
10	BRIS100FM3	360 015 098	0.002
12	BRIS120FM3	360 015 102	0.002
14	BRIS140FM3	360 015 106	0.002
16	BRIS160FM3	360 015 110	0.002
20	BRIS200FM3	360 015 118	0.002
22	BRIS220FM3	360 015 122	0.002
24	BRIS240FM3	360 015 126	0.002

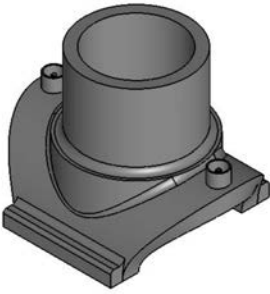


FM FLANGE ADAPTERS: Bolt Ring
DIPS Stainless, Class 335

- Approval: ASTM A351-CF8M
 - Approval: FM 1613
- Please call for more information on availability, pricing, other sizes and dimensions.

Size (inch)	GFCP Part No.	GF Part No.	weight (lb)
4	BRDS040FM3	360 014 782	0.002
6	BRDS060FM3	360 014 786	0.002
8	BRDS080FM3	360 014 790	0.002
10	BRDS100FM3	360 014 794	0.002
12	BRDS120FM3	360 014 798	0.002
14	BRDS140FM3	360 014 802	0.002
16	BRDS160FM3	360 014 806	0.002
18	BRDS180FM3	360 014 810	0.002
20	BRDS200FM3	360 014 814	0.002
24	BRDS240FM3	360 014 818	0.002

Electrofusion



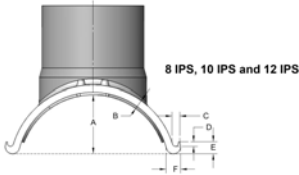
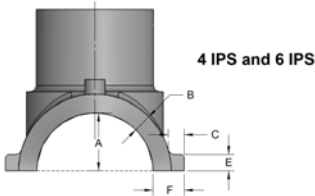
FM ELECTROFUSION: Branch Saddle
PE3408/PE4710
IPS, DR11, Class 200

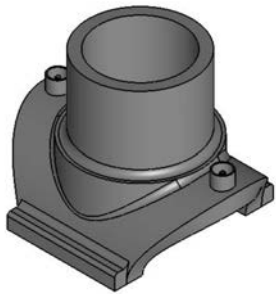
- Approval: ASTM D2513
- Approval: ASTM F1055
- Approval: ASTM D3261
- Approval: AWWA C906
- Approval: FM 1613
- Approval: NSF-61

Please call for more information on availability, pricing, other sizes and dimensions.



<...>	Size (inch)	GFCP Part No.	GF weight Part No.	weight (lb)	A (inch)	B (inch)	C (inch)	D (inch)	E (inch)	F (inch)
*	4 x 2	10004533	360 000 771	0.002	2.07	0.70	0.67	0.00	0.63	1.39
	4 x 4	10004528	360 000 767	0.002	2.07	0.70	0.67	0.00	0.63	1.39
*	6 x 2	10004544	360 000 779	1.323	3.49	0.98	0.62	0.00	0.63	1.55
	6 x 4	10004538	360 000 775	0.002	3.49	0.98	0.62	0.00	0.63	1.55
	8 x 2	10007712	360 000 784	2.006	3.64	0.81	0.68	0.38	1.00	1.20





FM ELECTROFUSION: Branch Saddle
PE3408/PE4710
IPS, DR9, Class 250

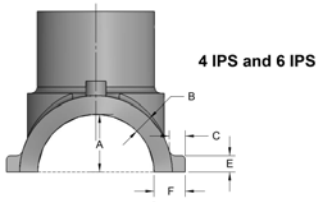
- Approval: ASTM D2513
- Approval: ASTM F1055
- Approval: ASTM D3261
- Approval: FM 1613
- Approval: NSF-61

Please call for more information on availability, pricing, other sizes and dimensions.

Size (inch)	GFCP Part No.	GF weight Part No.	(lb)	A (inch)	B (inch)	C (inch)	D (inch)	E (inch)	F (inch)
6 x 4	10004540	360 000 777	0.002	3.490	0.98	0.62	0.000	0.63	1.55



APPROVED

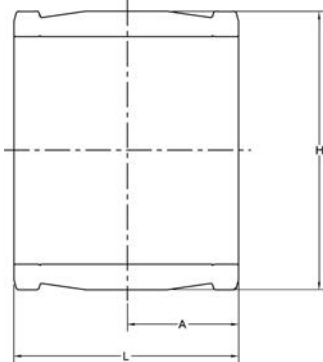
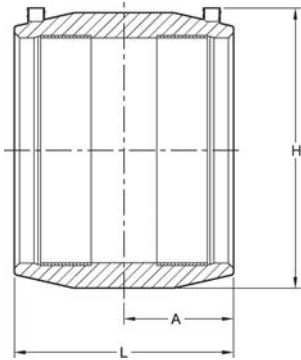




FM ELECTROFUSION: Coupling
PE3408/PE4710
IPS, Class 250

- Approval: ASTM D2513
- Approval: ASTM F1055
- Approval: AWWA C906
- Approval: FM 1613
- Approval: NSF-61

Please call for more information on availability, pricing, other sizes and dimensions.



Size (inch)	GFCP Part No.	GF Part No.	weight (lb)	H (inch)	L (inch)	A (inch)	Box Qty
4	10000360	360 000 936	1.676	6.51	6.14	3.00	10
6	10000359	360 000 939	4.497	8.70	8.35	4.10	8
8	10000361	360 000 944	8.444	12.99	11.59	5.80	4
10	10000362	360 000 903	15.234	13.04	10.40	5.20	1
12	10000363	360 000 906	23.898	15.84	11.40	5.70	1
14	10000202	360 000 909	35.186	17.24	12.13	6.06	1
16	10000204	360 000 913	47.091	19.65	13.54	6.77	1
18	10000207	360 000 917	65.610	22.13	14.96	7.48	1
20	10000210	360 000 924	91.007	24.57	16.46	8.23	1
24	10000216	360 000 930	177.009	30.59	19.50	9.75	1

Transition Fittings



FM WELD END: Transition Fitting
PE3408/PE4710
IPS, DR9, Class 250

- Approval: ASTM D2513
 - Approval: FM 1613
- Please call for more information on availability, pricing, other sizes and dimensions.



Size (inch)	GFCP Part No.	GF Part No.	weight (lb)	Box Qty
4 x 4	10011832	360 013 968	0.002	2
6 x 6	10006085	360 002 528	0.002	1
8 x 8	10006090	360 002 529	0.000	1
10 x 10	10006094	360 002 522	0.000	3
12 x 12	10011833	360 013 907	0.000	3

Fire Protection Pipe - Red Stripe

Table of contents

IPS - 40' Long	52
DIPS - 40' Long	55
IPS - 50' Long	57
DIPS - 50' Long	60

IPS - 40' Long



HDPE PIPE: Fire Protection (FM)
IPS, DR7, Class 335
Black Pipe, Red Stripe, 40' Long

- Black pipe, red stripe, red print line.
 - Red stripe optional.
 - Other lengths available.
 - Call for availability of other sizes and dimensions.
 - Approval: FM 1613
 - Approval: AWWA C906
 - Approval: ASTM F714
- **PIPE WEIGHT SHOWN PER FOOT****

Nominal Pipe Size (inch)	OD (inch)	GF Part No.	weight (lb)
2	2.375	360 031 598	0.950
3	3.500	360 031 604	2.060
4	4.500	360 031 610	3.400
6	6.625	360 031 616	7.370
8	8.625	360 031 628	12.500
10	10.750	360 031 640	19.420
12	12.750	360 031 652	27.310
14	14.000	360 031 664	32.930
16	16.000	360 031 676	43.010
18	18.000	360 031 688	54.430
20	20.000	360 031 700	67.200
22	22.000	360 031 712	81.320
24	24.000	360 031 724	96.770



HDPE Pipe: Fire Protection (FM)
IPS, DR7, Class 335
Black Pipe, 40' Long

- Black pipe, no stripe, red print line.
 - Red stripe optional.
 - Other lengths available.
 - Call for availability of other sizes and dimensions.
 - Approval: FM 1613
 - Approval: AWWA C906
 - Approval: ASTM F714
- **PIPE WEIGHT SHOWN PER FOOT****

Nominal Pipe Size (inch)	OD (inch)	GF Part No.	weight (lb)
2	2.375	360 031 599	0.950
3	3.500	360 031 605	2.060
4	4.500	360 031 611	3.400
6	6.625	360 031 618	7.370
8	8.625	360 031 630	12.500
10	10.750	360 031 642	19.420
12	12.750	360 031 654	27.310
14	14.000	360 031 666	32.930
16	16.000	360 031 678	43.010
18	18.000	360 031 690	54.430
20	20.000	360 031 702	67.200
22	22.000	360 031 714	81.320
24	24.000	360 031 726	96.770



HDPE PIPE: Fire Protection (FM)
IPS, DR9, Class 250
Black Pipe, Red Stripe, 40' Long

- Black pipe, red stripe, red print line.
- Red stripe optional.
- Other lengths available.
- Call for availability of other sizes and dimensions.
- Approval: FM 1613
- Approval: AWWA C906
- Approval: ASTM F714

****PIPE WEIGHT SHOWN PER FOOT****

Nominal Pipe Size (inch)	OD (inch)	GF Part No.	weight (lb)
2	2.375	360 031 600	0.770
3	3.500	360 031 606	1.660
4	4.500	360 031 612	2.750
6	6.625	360 031 620	5.960
8	8.625	360 031 632	10.110
10	10.750	360 031 644	15.700
12	12.750	360 031 656	22.080
14	14.000	360 031 668	26.630
16	16.000	360 031 680	34.780
18	18.000	360 031 692	44.020
20	20.000	360 031 704	54.340
22	22.000	360 031 716	65.750
24	24.000	360 031 728	78.250



HDPE PIPE: Fire Protection (FM)
IPS, DR9, Class 250
Black Pipe, 40' Long

- Black pipe, no stripe, red print line.
- Red stripe optional.
- Other lengths available.
- Call for availability of other sizes and dimensions.
- Approval: FM 1613
- Approval: AWWA C906
- Approval: ASTM F714

****PIPE WEIGHT SHOWN PER FOOT****

Nominal Pipe Size (inch)	OD (inch)	GF Part No.	weight (lb)
2	2.375	360 031 601	0.770
3	3.500	360 031 607	1.660
4	4.500	360 031 613	2.750
6	6.625	360 031 622	5.960
8	8.625	360 031 634	10.110
10	10.750	360 031 646	15.700
12	12.750	360 031 658	22.080
14	14.000	360 031 670	26.630
16	16.000	360 031 682	34.780
18	18.000	360 031 694	44.020
20	20.000	360 031 706	54.340
22	22.000	360 031 718	65.750
24	24.000	360 031 730	78.250



HDPE PIPE: Fire Protection (FM)
IPS, DR11, Class 200
Black Pipe, Red Stripe, 40' Long

- Black pipe, red stripe, red print line.
- Red stripe optional.
- Call for availability of other sizes and dimensions.
- Other lengths available.
- Approval: FM 1613
- Approval: AWWA C906
- Approval: ASTM F714

****PIPE WEIGHT SHOWN PER FOOT****

Nominal Pipe Size (inch)	OD (inch)	GF Part No.	weight (lb)
2	2.375	360 031 602	0.640
3	3.500	360 031 608	1.390
4	4.500	360 031 614	2.310
6	6.625	360 031 624	5.000
8	8.625	360 031 636	8.470
10	10.750	360 031 648	13.160
12	12.750	360 031 660	18.510
14	14.000	360 031 672	22.320
16	16.000	360 031 684	29.150
18	18.000	360 031 696	36.890
20	20.000	360 031 708	45.540
22	22.000	360 031 720	55.100
24	24.000	360 031 732	65.580



HDPE PIPE: Fire Protection (FM)
IPS, DR11, Class 200
Black Pipe, 40' Long

- Black pipe, no stripe, red print line.
- Red stripe optional.
- Other lengths available.
- Call for availability of other sizes and dimensions.
- Approval: FM 1613
- Approval: AWWA C906
- Approval: ASTM F714

****PIPE WEIGHT SHOWN PER FOOT****

Nominal Pipe Size (inch)	OD (inch)	GF Part No.	weight (lb)
2	2.375	360 031 603	0.640
3	3.500	360 031 609	1.390
4	4.500	360 031 615	2.310
6	6.625	360 031 626	5.000
8	8.625	360 031 638	8.470
10	10.750	360 031 650	13.160
12	12.750	360 031 662	18.510
14	14.000	360 031 674	22.320
16	16.000	360 031 686	29.150
18	18.000	360 031 698	36.890
20	20.000	360 031 710	45.540
22	22.000	360 031 722	55.100
24	24.000	360 031 735	65.580

DIPS - 40' Long



HDPE PIPE: Fire Protection (FM)
DIPS, DR9, Class 250
Black Pipe, Red Stripe, 40' Long

- Black pipe, red stripe, red print line.
 - Red stripe optional.
 - Other lengths available.
 - Call for availability of other sizes and dimensions.
 - Approval: FM 1613
 - Approval: AWWA C906
 - Approval: ASTM F714
- **PIPE WEIGHT SHOWN PER FOOT****

Nominal Pipe Size (inch)	OD (inch)	GF Part No.	weight (lb)
4	4.800	360 031 522	3.130
6	6.900	360 031 526	6.470
8	9.050	360 031 534	11.130
10	11.100	360 031 542	16.740
12	13.200	360 031 550	23.670
14	15.300	360 031 558	31.800
16	17.400	360 031 566	41.130
18	19.500	360 031 574	51.660
24	25.800	360 031 590	90.430



HDPE PIPE: Fire Protection (FM)
DIPS, DR9, Class 250
Black Pipe, 40' Long

- Black pipe, no stripe, red print line.
 - Red stripe optional.
 - Other lengths available.
 - Call for availability of other sizes and dimensions.
 - Approval: FM 1613
 - Approval: AWWA C906
 - Approval: ASTM F714
- **PIPE WEIGHT SHOWN PER FOOT****

Nominal Pipe Size (inch)	OD (inch)	GF Part No.	weight (lb)
4	4.800	360 031 523	3.130
6	6.900	360 031 528	6.470
8	9.050	360 031 536	11.130
10	11.100	360 031 544	16.740
14	15.300	360 031 560	31.800
16	17.400	360 031 568	41.130
18	19.500	360 031 576	51.660
20	21.600	360 031 584	63.380



**HDPE PIPE: Fire Protection (FM)
DIPS, DR11, Class 200
Black Pipe, Red Stripe, 40' Long**

- Black pipe, red stripe, red print line.
- Red stripe optional.
- Other lengths available.
- Call for availability of other sizes and dimensions.
- Approval: FM 1613
- Approval: AWWA C906
- Approval: ASTM F714

****PIPE WEIGHT SHOWN PER FOOT****



Nominal Pipe Size (inch)	OD (inch)	GF Part No.	weight (lb)
4	4.800	360 031 524	2.620
6	6.900	360 031 530	5.420
8	9.050	360 031 538	9.320
10	11.100	360 031 546	14.030
12	13.200	360 031 554	19.840
14	15.300	360 031 562	26.650
16	17.400	360 031 570	34.470
18	19.500	360 031 578	43.290
20	21.600	360 031 586	53.120
24	25.800	360 031 594	75.780



**HDPE PIPE: Fire Protection (FM)
DIPS, DR11, Class 200
Black Pipe, 40' Long**

- Black pipe, no stripe, red print line.
- Red stripe optional.
- Other lengths available.
- Call for availability of other sizes and dimensions.
- Approval: FM 1613
- Approval: AWWA C906
- Approval: ASTM F714

****PIPE WEIGHT SHOWN PER FOOT****



Nominal Pipe Size (inch)	OD (inch)	GF Part No.
4	4.800	360 031 525
6	6.900	360 031 532
8	9.050	360 031 540
10	11.100	360 031 548
12	13.200	360 031 556
14	15.300	360 031 564
16	17.400	360 031 572
18	19.500	360 031 580
20	21.600	360 031 588
24	25.800	360 031 596

IPS - 50' Long



HDPE PIPE: Fire Protection (FM)
IPS, DR7, Class 335
Black Pipe, Red Stripe, 50' Long

- Black pipe, red stripe, red print line.
- Red stripe optional.
- Other lengths available.
- Call for availability of other sizes and dimensions.
- Approval: FM 1613
- Approval: AWWA C906
- Approval: ASTM F714

****PIPE WEIGHT SHOWN PER FOOT****

Nominal Pipe Size (inch)	OD (inch)	GF Part No.	weight (lb)
8	8.625	360 031 629	10.000
10	10.750	360 031 641	15.536
12	12.750	360 031 653	21.848
14	14.000	360 031 665	26.344
16	16.000	360 031 677	34.408
18	18.000	360 031 689	43.544
20	20.000	360 031 701	53.760
22	22.000	360 031 713	65.056
24	24.000	360 031 725	77.416



HDPE PIPE: Fire Protection (FM)
IPS, DR7, Class 335
Black Pipe, 50' Long

- Black pipe, no stripe, red print line.
- Red stripe optional.
- Other lengths available.
- Call for availability of other sizes and dimensions.
- Approval: FM 1613
- Approval: AWWA C906
- Approval: ASTM F714

****PIPE WEIGHT SHOWN PER FOOT****

Nominal Pipe Size (inch)	OD (inch)	GF Part No.	weight (lb)
6	6.625	360 031 619	7.370
8	8.625	360 031 631	12.500
10	10.750	360 031 643	19.420
12	12.750	360 031 655	27.310
14	14.000	360 031 667	32.930
16	16.000	360 031 679	43.010
18	18.000	360 031 691	54.430
20	20.000	360 031 703	67.200
22	22.000	360 031 715	81.320
24	24.000	360 031 727	96.770



HDPE PIPE: Fire Protection (FM)
IPS, DR9, Class 250
Black Pipe, Red Stripe, 50' Long

- Black pipe, red stripe, red print line.
- Red stripe optional.
- Other lengths available.
- Call for availability of other sizes and dimensions.
- Approval: FM 1613
- Approval: AWWA C906
- Approval: ASTM F714

****PIPE WEIGHT SHOWN PER FOOT****



Nominal Pipe Size (inch)	OD (inch)	GF Part No.	weight (lb)
6	6.625	360 031 621	5.960
8	8.625	360 031 633	10.110
10	10.750	360 031 645	15.700
12	12.750	360 031 657	22.080
14	14.000	360 031 669	26.630
16	16.000	360 031 681	34.780
18	18.000	360 031 693	44.020
20	20.000	360 031 705	54.340
22	22.000	360 031 717	65.750
24	24.000	360 031 729	78.250



HDPE PIPE: Fire Protection (FM)
IPS, DR9, Class 250
Black Pipe, 50' Long

- Black pipe, no stripe, red print line.
- Red stripe optional.
- Other lengths available.
- Call for availability of other sizes and dimensions.
- Approval: FM 1613
- Approval: AWWA C906
- Approval: ASTM F714

****PIPE WEIGHT SHOWN PER FOOT****



Nominal Pipe Size (inch)	OD (inch)	GF Part No.	weight (lb)
6	6.625	360 031 623	4.768
8	8.625	360 031 635	8.088
10	10.750	360 031 647	12.560
12	12.750	360 031 659	17.664
14	14.000	360 031 671	21.304
16	16.000	360 031 683	27.824
18	18.000	360 031 695	35.216
20	20.000	360 031 707	43.472
22	22.000	360 031 719	52.600
24	24.000	360 031 731	62.600



HDPE PIPE: Fire Protection (FM)
IPS, DR11, Class 200
Black Pipe, Red Stripe, 50' Long

- Black pipe, red stripe, red print line.
- Red stripe optional.
- Other lengths available.
- Call for availability of other sizes and dimensions.
- Approval: FM 1613
- Approval: AWWA C906
- Approval: ASTM F714

****PIPE WEIGHT SHOWN PER FOOT****

Nominal Pipe Size (inch)	OD (inch)	GF Part No.	weight (lb)
6	6.625	360 031 625	250.000
8	8.625	360 031 637	423.500
10	10.750	360 031 649	658.000
12	12.750	360 031 661	925.500
14	14.000	360 031 673	1116.000
16	16.000	360 031 685	1457.500
18	18.000	360 031 697	1844.500
20	20.000	360 031 709	2277.000
22	22.000	360 031 721	2755.000
24	24.000	360 031 733	3279.000



HDPE PIPE: Fire Protection (FM)
IPS, DR11, Class 200
Black Pipe, 50' Long

- Black pipe, no stripe, red print line.
- Red stripe optional.
- Other lengths available.
- Call for availability of other sizes and dimensions.
- Approval: FM 1613
- Approval: AWWA C906
- Approval: ASTM F714

****PIPE WEIGHT SHOWN PER FOOT****

Nominal Pipe Size (inch)	OD (inch)	GF Part No.	weight (lb)
6	6.625	360 031 627	4.000
8	8.625	360 031 639	6.776
10	10.750	360 031 651	10.528
12	12.750	360 031 663	14.808
14	14.000	360 031 675	17.856
16	16.000	360 031 687	23.320
18	18.000	360 031 699	29.512
20	20.000	360 031 711	36.432
22	22.000	360 031 723	44.080
24	24.000	360 031 735	52.464

DIPS - 50' Long



HDPE PIPE: Fire Protection (FM)
DIPS, DR9, Class 250
Black Pipe, Red Stripe, 50' Long

- Black pipe, red stripe, red print line.
 - Red stripe optional.
 - Other lengths available.
 - Call for availability of other sizes and dimensions.
 - Approval: FM 1613
 - Approval: AWWA C906
 - Approval: ASTM F714
- **PIPE WEIGHT SHOWN PER FOOT****

Nominal Pipe Size (inch)	OD (inch)	GF Part No.	weight (lb)
20	21.600	360 031 583	63.380
24	25.800	360 031 591	90.430



HDPE PIPE: Fire Protection (FM)
DIPS, DR9, Class 250
Black Pipe, 50' Long

- Black pipe, no stripe, red print line.
 - Red stripe optional.
 - Other lengths available.
 - Call for availability of other sizes and dimensions.
 - Approval: FM 1613
 - Approval: AWWA C906
 - Approval: ASTM F714
- **PIPE WEIGHT SHOWN PER FOOT****

Nominal Pipe Size (inch)	OD (inch)	GF Part No.	weight (lb)
6	6.900	360 031 529	6.470
8	9.050	360 031 537	11.130
10	11.100	360 031 545	16.740
12	13.200	360 031 553	23.670
14	15.300	360 031 561	31.800
16	17.400	360 031 569	41.130
18	19.500	360 031 577	51.660
20	21.600	360 031 585	63.380
24	25.800	360 031 593	90.430



**HDPE PIPE: Fire Protection (FM)
DIPS, DR11, Class 200
Black Pipe, Red Stripe, 50' Long**

- Black pipe, red stripe, red print line.
 - Red stripe optional.
 - Other lengths available.
 - Call for availability of other sizes and dimensions.
 - Approval: FM 1613
 - Approval: AWWA C906
 - Approval: ASTM F714
- **PIPE WEIGHT SHOWN PER FOOT****

Nominal Pipe Size (inch)	OD (inch)	GF Part No.	weight (lb)
6	6.900	360 031 531	5.420
8	9.050	360 031 539	9.320
10	11.100	360 031 547	14.030
12	13.200	360 031 555	19.840
14	15.300	360 031 563	26.650
16	17.400	360 031 571	34.470
18	19.500	360 031 579	43.290
20	21.600	360 031 587	53.120
24	25.800	360 031 595	75.780



**HDPE PIPE: Fire Protection (FM)
DIPS, DR11, Class 200
Black Pipe, 50' Long**

- Black pipe, no stripe, red print line.
 - Red stripe optional.
 - Other lengths available.
 - Call for availability of other sizes and dimensions.
 - Approval: FM 1613
 - Approval: AWWA C906
 - Approval: ASTM F714
- **PIPE WEIGHT SHOWN PER FOOT****

Nominal Pipe Size (inch)	OD (inch)	GF Part No.	weight (lb)
6	6.900	360 031 533	5.420
8	9.050	360 031 541	9.320
10	11.100	360 031 549	14.030
12	13.200	360 031 557	19.840
14	15.300	360 031 565	26.650
16	17.400	360 031 573	34.470
18	19.500	360 031 581	43.290
20	21.600	360 031 589	53.120
24	25.800	360 031 597	75.780

Index

Part No.	Page	Part No.	Page	Part No.	Page	Part No.	Page
10000202	47	10009505	13	360 001 421	32	360 014 688	34
10000204	47	10009506	13	360 001 440	32	360 014 689	35
10000207	47	10009508	2	360 001 453	32	360 014 691	33
10000210	47	10009509	5	360 001 469	32	360 014 692	34
10000216	47	10009511	5	360 001 482	32	360 014 693	35
10000359	47	10009623	29	360 001 562	31	360 014 696	38
10000360	47	10011832	48	360 001 582	31	360 014 697	36
10000361	47	10011833	48	360 001 600	31	360 014 698	37
10000362	47	360 000 043	14	360 001 601	31	360 014 700	38
10000363	47	360 000 044	14	360 002 522	48	360 014 701	36
10000627	3	360 000 053	6	360 002 528	48	360 014 702	37
10000628	3	360 000 056	32	360 002 529	48	360 014 704	38
10002074	6	360 000 066	5	360 003 453	5	360 014 705	36
10003642	31	360 000 068	5	360 003 455	5	360 014 706	37
10003683	32	360 000 167	13	360 003 464	29	360 014 708	38
10004071	13	360 000 177	13	360 004 462	31	360 014 709	36
10004079	13	360 000 202	13	360 004 463	31	360 014 710	37
10004093	13	360 000 257	14	360 004 464	31	360 014 712	38
10004125	14	360 000 274	14	360 004 465	31	360 014 713	36
10004135	14	360 000 308	14	360 004 467	19	360 014 714	37
10004156	14	360 000 325	2	360 004 468	19	360 014 716	38
10004169	2	360 000 342	2	360 004 469	19	360 014 717	36
10004174	1	360 000 350	1	360 004 470	19	360 014 718	37
10004176	2	360 000 353	2	360 004 472	15	360 014 720	38
10004180	1	360 000 360	1	360 004 473	11	360 014 721	36
10004185	1	360 000 363	2	360 004 474	11	360 014 722	37
10004217	5	360 000 370	1	360 004 475	11	360 014 724	38
10004222	3	360 000 405	3	360 004 476	7	360 014 725	36
10004223	5	360 000 412	3	360 004 478	35	360 014 726	37
10004227	3	360 000 447	5	360 004 479	35	360 014 728	38
10004228	3	360 000 457	3	360 004 480	35	360 014 729	36
10004233	6	360 000 459	5	360 004 481	35	360 014 730	37
10004239	6	360 000 471	3	360 004 491	11	360 014 732	38
10004242	6	360 000 472	3	360 004 492	3	360 014 733	36
10004247	6	360 000 500	6	360 004 493	3	360 014 734	37
10004255	6	360 000 504	6	360 013 907	48	360 014 738	39
10004263	6	360 000 513	6	360 013 968	48	360 014 739	40
10004264	6	360 000 525	6	360 014 655	33	360 014 740	41
10004268	6	360 000 533	6	360 014 656	34	360 014 742	39
10004273	6	360 000 538	6	360 014 657	35	360 014 743	40
10004274	6	360 000 546	6	360 014 659	33	360 014 744	41
10004326	32	360 000 547	6	360 014 660	34	360 014 746	39
10004354	32	360 000 550	6	360 014 661	35	360 014 747	40
10004369	32	360 000 551	6	360 014 663	33	360 014 748	41
10004491	31	360 000 559	6	360 014 664	34	360 014 752	41
10004528	45	360 000 560	6	360 014 665	35	360 014 756	41
10004533	45	360 000 767	45	360 014 667	33	360 014 760	41
10004538	45	360 000 771	45	360 014 668	34	360 014 764	41
10004540	46	360 000 775	45	360 014 669	35	360 014 768	41
10004544	45	360 000 777	46	360 014 671	33	360 014 772	41
10006085	48	360 000 779	45	360 014 672	34	360 014 773	41
10006090	48	360 000 784	45	360 014 673	35	360 014 780	42
10006094	48	360 000 903	47	360 014 675	33	360 014 781	43
10007483	5	360 000 906	47	360 014 676	34	360 014 782	44
10007484	2	360 000 909	47	360 014 677	35	360 014 784	42
10007712	45	360 000 913	47	360 014 679	33	360 014 785	43
10007784	5	360 000 917	47	360 014 680	34	360 014 786	44
10007785	14	360 000 924	47	360 014 681	35	360 014 788	42
10007787	6	360 000 930	47	360 014 683	33	360 014 789	43
10007788	14	360 000 936	47	360 014 684	34	360 014 790	44
10007789	6	360 000 939	47	360 014 685	35	360 014 792	42
10009504	13	360 000 944	47	360 014 687	33	360 014 793	43

Index

Part No.	Page	Part No.	Page	Part No.	Page	Part No.	Page
360 014 794	44	360 014 909	36	360 015 013	39	360 015 118	44
360 014 796	42	360 014 910	37	360 015 014	40	360 015 120	42
360 014 797	43	360 014 911	38	360 015 015	41	360 015 121	43
360 014 798	44	360 014 913	36	360 015 018	39	360 015 122	44
360 014 800	42	360 014 914	37	360 015 019	40	360 015 124	42
360 014 801	43	360 014 915	38	360 015 020	41	360 015 125	43
360 014 802	44	360 014 918	37	360 015 023	39	360 015 126	44
360 014 804	42	360 014 919	38	360 015 024	40	360 015 128	42
360 014 805	43	360 014 922	36	360 015 025	41	360 015 129	43
360 014 806	44	360 014 923	37	360 015 028	39	360 015 131	42
360 014 808	42	360 014 924	38	360 015 029	40	360 015 132	43
360 014 809	43	360 014 926	36	360 015 030	41	360 015 134	42
360 014 810	44	360 014 927	37	360 015 033	39	360 015 135	43
360 014 812	42	360 014 928	38	360 015 034	40	360 015 137	42
360 014 813	43	360 014 930	36	360 015 035	41	360 015 139	42
360 014 814	44	360 014 931	37	360 015 038	39	360 015 142	42
360 014 816	42	360 014 932	38	360 015 039	40	360 015 549	16
360 014 817	43	360 014 935	36	360 015 040	41	360 015 582	15
360 014 818	44	360 014 936	37	360 015 042	39	360 015 596	19
360 014 826	33	360 014 937	38	360 015 043	40	360 015 614	15
360 014 827	34	360 014 940	36	360 015 044	41	360 015 626	19
360 014 828	35	360 014 941	37	360 015 047	39	360 015 628	20
360 014 830	33	360 014 942	38	360 015 048	40	360 015 646	15
360 014 831	34	360 014 945	36	360 015 049	41	360 015 660	19
360 014 832	35	360 014 946	37	360 015 051	39	360 015 679	15
360 014 834	33	360 014 947	38	360 015 052	40	360 015 709	15
360 014 835	34	360 014 950	36	360 015 055	40	360 015 722	19
360 014 838	33	360 014 951	37	360 015 058	39	360 015 862	14
360 014 839	34	360 014 952	38	360 015 059	40	360 015 874	13
360 014 841	33	360 014 955	36	360 015 061	39	360 015 882	14
360 014 842	34	360 014 956	37	360 015 063	39	360 015 883	14
360 014 844	33	360 014 957	38	360 015 075	42	360 015 929	14
360 014 845	34	360 014 959	36	360 015 076	43	360 015 941	21
360 014 848	33	360 014 960	37	360 015 077	44	360 015 954	15
360 014 849	34	360 014 961	38	360 015 079	42	360 015 955	15
360 014 850	35	360 014 964	36	360 015 080	43	360 015 957	17
360 014 853	33	360 014 965	37	360 015 081	44	360 015 958	17
360 014 854	34	360 014 966	38	360 015 083	42	360 015 960	13
360 014 855	35	360 014 968	36	360 015 084	43	360 015 973	18
360 014 858	33	360 014 969	37	360 015 085	44	360 015 976	20
360 014 859	34	360 014 971	36	360 015 088	42	360 015 977	20
360 014 860	35	360 014 972	37	360 015 089	43	360 015 979	14
360 014 863	33	360 014 975	36	360 015 090	44	360 015 985	21
360 014 864	34	360 014 976	37	360 015 092	42	360 015 998	16
360 014 865	35	360 014 978	36	360 015 093	43	360 015 999	15
360 014 871	33	360 014 980	36	360 015 094	44	360 016 000	15
360 014 872	34	360 014 983	36	360 015 096	42	360 016 002	17
360 014 873	35	360 014 992	39	360 015 097	43	360 016 003	17
360 014 875	33	360 014 993	40	360 015 098	44	360 016 016	18
360 014 876	34	360 014 994	41	360 015 100	42	360 016 017	18
360 014 877	35	360 014 996	39	360 015 101	43	360 016 018	21
360 014 880	33	360 014 997	40	360 015 102	44	360 016 019	20
360 014 881	34	360 014 998	41	360 015 104	42	360 016 020	20
360 014 882	35	360 015 000	39	360 015 105	43	360 016 037	16
360 014 884	33	360 015 001	40	360 015 106	44	360 016 038	15
360 014 885	34	360 015 002	41	360 015 108	42	360 016 039	18
360 014 887	33	360 015 005	39	360 015 109	43	360 016 040	17
360 014 888	34	360 015 006	40	360 015 110	44	360 016 041	17
360 014 891	33	360 015 007	41	360 015 112	42	360 016 053	18
360 014 892	34	360 015 009	39	360 015 113	43	360 016 054	18
360 014 894	33	360 015 010	40	360 015 116	42	360 016 055	21
360 014 896	33	360 015 011	41	360 015 117	43	360 016 056	20

Index

Part No.	Page	Part No.	Page	Part No.	Page	Part No.	Page
360 016 062	21	360 016 698	32	360 017 751	29	360 018 927	12
360 016 076	15	360 016 699	31	360 017 752	27	360 018 928	11
360 016 077	15	360 016 705	32	360 017 763	29	360 018 944	11
360 016 079	17	360 016 706	31	360 017 764	27	360 018 949	12
360 016 080	17	360 016 734	32	360 017 776	29	360 018 950	11
360 016 091	18	360 016 752	31	360 017 777	27	360 018 951	11
360 016 092	19	360 016 760	31	360 017 785	29	360 018 956	12
360 016 093	21	360 016 761	31	360 017 786	27	360 018 957	11
360 016 094	20	360 016 770	31	360 017 793	29	360 018 958	11
360 016 095	21	360 016 771	31	360 017 794	27	360 018 962	12
360 016 101	22	360 016 778	31	360 017 802	27	360 018 963	11
360 016 102	21	360 016 779	31	360 018 260	4	360 018 964	11
360 016 112	15	360 016 787	32	360 018 267	4	360 018 968	11
360 016 113	16	360 016 788	31	360 018 274	4	360 018 973	10
360 016 114	18	360 016 789	31	360 018 284	4	360 018 983	12
360 016 115	17	360 016 795	32	360 018 290	4	360 018 984	11
360 016 116	17	360 016 806	32	360 018 355	3	360 018 988	12
360 016 127	18	360 016 807	31	360 018 360	3	360 018 989	11
360 016 128	19	360 016 808	31	360 018 366	3	360 018 994	12
360 016 129	21	360 017 154	7	360 018 379	3	360 018 999	10
360 016 131	21	360 017 160	7	360 018 388	5	360 019 005	12
360 016 138	21	360 017 165	7	360 018 389	3	360 019 016	12
360 016 147	16	360 017 170	8	360 018 400	5	360 019 020	12
360 016 148	17	360 017 187	7	360 018 401	3	360 019 021	12
360 016 149	16	360 017 213	7	360 018 413	5	360 019 022	11
360 016 151	17	360 017 225	7	360 018 414	3	360 019 025	12
360 016 152	17	360 017 233	9	360 018 415	3	360 019 026	12
360 016 161	18	360 017 234	8	360 018 423	5	360 019 027	10
360 016 162	18	360 017 235	7	360 018 424	3	360 019 032	12
360 016 163	19	360 017 243	9	360 018 425	3	360 019 033	11
360 016 165	20	360 017 244	8	360 018 439	5	360 019 037	12
360 016 166	21	360 017 249	9	360 018 440	3	360 019 038	12
360 016 171	22	360 017 250	8	360 018 441	3	360 019 039	11
360 016 181	16	360 017 251	7	360 018 451	5	360 019 061	11
360 016 182	17	360 017 256	9	360 018 452	3	360 019 064	12
360 016 183	16	360 017 257	8	360 018 453	3	360 019 066	11
360 016 184	18	360 017 258	7	360 018 463	5	360 019 069	12
360 016 185	17	360 017 264	8	360 018 464	4	360 019 071	11
360 016 195	18	360 017 265	8	360 018 475	4	360 019 075	12
360 016 196	18	360 017 270	9	360 018 493	4	360 019 076	12
360 016 197	19	360 017 271	8	360 018 604	3	360 019 077	11
360 016 198	21	360 017 272	7	360 018 691	10	360 019 104	11
360 016 217	16	360 017 277	9	360 018 699	10	360 019 108	12
360 016 218	15	360 017 278	7	360 018 715	10	360 019 109	12
360 016 221	17	360 017 279	7	360 018 755	10	360 019 110	10
360 016 222	17	360 017 290	9	360 018 769	10	360 019 116	11
360 016 231	18	360 017 291	7	360 018 790	10	360 019 121	12
360 016 232	18	360 017 600	28	360 018 850	11	360 019 122	11
360 016 235	20	360 017 611	28	360 018 856	11	360 019 161	10
360 016 276	21	360 017 623	28	360 018 867	11	360 019 190	12
360 016 286	15	360 017 632	30	360 018 874	10	360 019 191	12
360 016 287	16	360 017 646	30	360 018 880	11	360 019 192	11
360 016 288	18	360 017 647	28	360 018 890	12	360 019 196	12
360 016 289	17	360 017 656	30	360 018 891	11	360 019 197	10
360 016 290	17	360 017 657	28	360 018 896	10	360 019 198	11
360 016 299	19	360 017 666	30	360 018 901	12	360 019 205	11
360 016 302	21	360 017 667	28	360 018 902	11	360 019 210	12
360 016 303	20	360 017 675	30	360 018 906	10	360 019 212	11
360 016 304	21	360 017 719	27	360 018 917	12	360 019 633	23
360 016 612	32	360 017 730	27	360 018 918	11	360 019 640	23
360 016 630	32	360 017 740	29	360 018 921	12	360 019 646	23
360 016 644	32	360 017 741	27	360 018 922	10	360 019 647	23

Index

Part No.	Page	Part No.	Page	Part No.	Page	Part No.	Page
360 019 652	23	360 031 550	55	360 031 620	53	360 031 682	53
360 019 658	23	360 031 553	60	360 031 621	58	360 031 683	58
360 019 664	23	360 031 554	56	360 031 622	53	360 031 684	54
360 019 670	23	360 031 555	61	360 031 623	58	360 031 685	59
360 019 868	13	360 031 556	56	360 031 624	54	360 031 686	54
360 028 266	13	360 031 557	61	360 031 625	59	360 031 687	59
360 028 481	8	360 031 558	55	360 031 626	54	360 031 688	52
360 028 483	20	360 031 560	55	360 031 627	59	360 031 689	57
360 028 523	8	360 031 561	60	360 031 628	52	360 031 690	52
360 028 555	5	360 031 562	56	360 031 629	57	360 031 691	57
360 028 557	5	360 031 563	61	360 031 630	52	360 031 692	53
360 028 590	7	360 031 564	56	360 031 631	57	360 031 693	58
360 028 591	26	360 031 565	61	360 031 632	53	360 031 694	53
360 028 618	11	360 031 566	55	360 031 633	58	360 031 695	58
360 028 622	5	360 031 568	55	360 031 634	53	360 031 696	54
360 028 626	5	360 031 569	60	360 031 635	58	360 031 697	59
360 028 653	5	360 031 570	56	360 031 636	54	360 031 698	54
360 028 660	5	360 031 571	61	360 031 637	59	360 031 699	59
360 028 664	5	360 031 572	56	360 031 638	54	360 031 700	52
360 028 680	21	360 031 573	61	360 031 639	59	360 031 701	57
360 028 694	5	360 031 574	55	360 031 640	52	360 031 702	52
360 028 695	11	360 031 576	55	360 031 641	57	360 031 703	57
360 028 717	7	360 031 577	60	360 031 642	52	360 031 704	53
360 028 740	3	360 031 578	56	360 031 643	57	360 031 705	58
360 028 744	5	360 031 579	61	360 031 644	53	360 031 706	53
360 028 747	5	360 031 580	56	360 031 645	58	360 031 707	58
360 028 748	5	360 031 581	61	360 031 646	53	360 031 708	54
360 028 749	3	360 031 583	60	360 031 647	58	360 031 709	59
360 028 755	3	360 031 584	55	360 031 648	54	360 031 710	54
360 028 947	3	360 031 585	60	360 031 649	59	360 031 711	59
360 028 948	3	360 031 586	56	360 031 650	54	360 031 712	52
360 028 949	3	360 031 587	61	360 031 651	59	360 031 713	57
360 028 999	11	360 031 588	56	360 031 652	52	360 031 714	52
360 029 021	5	360 031 589	61	360 031 653	57	360 031 715	57
360 029 022	3	360 031 590	55	360 031 654	52	360 031 716	53
360 029 028	3	360 031 591	60	360 031 655	57	360 031 717	58
360 029 039	13	360 031 593	60	360 031 656	53	360 031 718	53
360 031 522	55	360 031 594	56	360 031 657	58	360 031 719	58
360 031 523	55	360 031 595	61	360 031 658	53	360 031 720	54
360 031 524	56	360 031 596	56	360 031 659	58	360 031 721	59
360 031 525	56	360 031 597	61	360 031 660	54	360 031 722	54
360 031 526	55	360 031 598	52	360 031 661	59	360 031 723	59
360 031 528	55	360 031 599	52	360 031 662	54	360 031 724	52
360 031 529	60	360 031 600	53	360 031 663	59	360 031 725	57
360 031 530	56	360 031 601	53	360 031 664	52	360 031 726	52
360 031 531	61	360 031 602	54	360 031 665	57	360 031 727	57
360 031 532	56	360 031 603	54	360 031 666	52	360 031 728	53
360 031 533	61	360 031 604	52	360 031 667	57	360 031 729	58
360 031 534	55	360 031 605	52	360 031 668	53	360 031 730	53
360 031 536	55	360 031 606	53	360 031 669	58	360 031 731	58
360 031 537	60	360 031 607	53	360 031 670	53	360 031 732	54
360 031 538	56	360 031 608	54	360 031 671	58	360 031 733	59
360 031 539	61	360 031 609	54	360 031 672	54	360 031 735	54, 59
360 031 540	56	360 031 610	52	360 031 673	59	360 031 886	3
360 031 541	61	360 031 611	52	360 031 674	54	360 031 943	10
360 031 542	55	360 031 612	53	360 031 675	59	360 031 957	21
360 031 544	55	360 031 613	53	360 031 676	52	360 031 958	17
360 031 545	60	360 031 614	54	360 031 677	57	360 031 959	21
360 031 546	56	360 031 615	54	360 031 678	52	360 032 006	3
360 031 547	61	360 031 616	52	360 031 679	57	360 032 007	12
360 031 548	56	360 031 618	52	360 031 680	53	360 032 008	8
360 031 549	61	360 031 619	57	360 031 681	58	360 032 009	20

Index

Part No.	Page	Part No.	Page	Part No.	Page	Part No.	Page
360 032 010	20	BRDE040FM1	36	BRDS140FM3	44	BRIE020FM3	38
360 032 011	20	BRDE040FM2	37	BRDS160FM1	42	BRIE030FM1	36
360 032 012	15	BRDE060275	38	BRDS160FM2	43	BRIE030FM2	37
360 032 013	15	BRDE060FM1	36	BRDS160FM3	44	BRIE030FM3	38
360 032 031	6	BRDE060FM2	37	BRDS180FM1	42	BRIE040FM2	37
360 032 059	26	BRDE080275	38	BRDS180FM2	43	BRIE040FM3	38
360 032 062	31	BRDE080FM1	36	BRDS180FM3	44	BRIE060FM1	36
360 032 064	16	BRDE080FM2	37	BRDS200FM1	42	BRIE060FM2	37
360 032 081	13	BRDE100275	38	BRDS200FM2	43	BRIE060FM3	38
360 032 161	8	BRDE100FM1	36	BRDS200FM3	44	BRIE080FM1	36
360 032 210	3	BRDE100FM2	37	BRDS240FM1	42	BRIE080FM2	37
360 032 211	3	BRDE120275	38	BRDS240FM2	43	BRIE080FM3	38
360 032 213	26	BRDE120FM1	36	BRDS240FM3	44	BRIE100FM1	36
360 032 214	26	BRDE120FM2	37	BRID020FM1	33	BRIE100FM2	37
360 032 215	26	BRDE140275	38	BRID020FM2	34	BRIE100FM3	38
360 032 216	26	BRDE140FM1	36	BRID020FM3	35	BRIE120FM1	36
360 061 105	11	BRDE140FM2	37	BRID030FM1	33	BRIE120FM2	37
360 061 227	4	BRDE160275	38	BRID030FM2	34	BRIE120FM3	38
360 061 228	4	BRDE160FM1	36	BRID030FM3	35	BRIE140FM1	36
360 061 361	21	BRDE160FM2	37	BRID040FM1	33	BRIE140FM2	37
360 061 364	18	BRDE180275	38	BRID040FM2	34	BRIE140FM3	38
360 061 548	8	BRDE180FM1	36	BRID040FM3	35	BRIE160FM1	36
360 061 848	5	BRDE180FM2	37	BRID060FM1	33	BRIE160FM2	37
360 062 126	15	BRDE200275	38	BRID060FM2	34	BRIE160FM3	38
360 062 133	4	BRDE200FM1	36	BRID060FM3	35	BRIE180FM1	36
360 062 134	3	BRDE200FM2	37	BRID080FM1	33	BRIE180FM2	37
360 062 135	11	BRDE240275	38	BRID080FM2	34	BRIE180FM3	38
6912104	32	BRDE240FM1	36	BRID080FM3	35	BRIE200FM1	36
6912126	32	BRDE240FM2	37	BRID100FM1	33	BRIE200FM2	37
6912377	31	BRDG040FM1	39	BRID100FM2	34	BRIE200FM3	38
6912378	31	BRDG040FM2	40	BRID100FM3	35	BRIE220FM1	36
BRDD040FM1	33	BRDG040FM3	41	BRID120FM1	33	BRIE220FM2	37
BRDD040FM2	34	BRDG060FM1	39	BRID120FM2	34	BRIE220FM3	38
BRDD040FM3	35	BRDG060FM2	40	BRID120FM3	35	BRIE240FM1	36
BRDD060FM1	33	BRDG060FM3	41	BRID140FM1	33	BRIE240FM2	37
BRDD060FM2	34	BRDG080FM1	39	BRID140FM2	34	BRIE240FM3	38
BRDD060FM3	35	BRDG080FM2	40	BRID140FM3	35	BRIE260FM1	36
BRDD080FM1	33	BRDG080FM3	41	BRID160FM1	33	BRIE260FM2	37
BRDD080FM2	34	BRDG100FM3	41	BRID160FM2	34	BRIE280FM1	36
BRDD080FM3	35	BRDG120FM3	41	BRID160FM3	35	BRIE280FM2	37
BRDD100FM1	33	BRDG140FM3	41	BRID180FM1	33	BRIE300FM1	36
BRDD100FM2	34	BRDG160FM3	41	BRID180FM2	34	BRIE300FM2	37
BRDD100FM3	35	BRDG180FM3	41	BRID180FM3	35	BRIE320FM1	36
BRDD120FM1	33	BRDG200FM3	41	BRID200FM1	33	BRIE340FM1	36
BRDD120FM2	34	BRDG240275	41	BRID200FM2	34	BRIE360FM1	36
BRDD120FM3	35	BRDS040FM1	42	BRID200FM3	35	BRIG020FM1	39
BRDD140FM1	33	BRDS040FM2	43	BRID220FM1	33	BRIG020FM2	40
BRDD140FM2	34	BRDS040FM3	44	BRID220FM2	34	BRIG020FM3	41
BRDD140FM3	35	BRDS060FM1	42	BRID220FM3	35	BRIG030FM1	39
BRDD160FM1	33	BRDS060FM2	43	BRID240FM1	33	BRIG030FM2	40
BRDD160FM2	34	BRDS060FM3	44	BRID240FM2	34	BRIG030FM3	41
BRDD160FM3	35	BRDS080FM1	42	BRID240FM3	35	BRIG040FM1	39
BRDD180FM1	33	BRDS080FM2	43	BRID260FM1	33	BRIG040FM2	40
BRDD180FM2	34	BRDS080FM3	44	BRID260FM2	34	BRIG040FM3	41
BRDD180FM3	35	BRDS100FM1	42	BRID280FM1	33	BRIG060FM1	39
BRDD200FM1	33	BRDS100FM2	43	BRID280FM2	34	BRIG060FM2	40
BRDD200FM2	34	BRDS100FM3	44	BRID300FM1	33	BRIG060FM3	41
BRDD200FM3	35	BRDS120FM1	42	BRID300FM2	34	BRIG080FM1	39
BRDD240FM1	33	BRDS120FM2	43	BRID320FM1	33	BRIG080FM2	40
BRDD240FM2	34	BRDS120FM3	44	BRID340FM1	33	BRIG080FM3	41
BRDD240FM3	35	BRDS140FM1	42	BRIE020FM1	36	BRIG100FM1	39
BRDE040275	38	BRDS140FM2	43	BRIE020FM2	37	BRIG100FM2	40

Index

Part No.	Page	Part No.	Page	Part No.	Page	Part No.	Page
BRIG100FM3	41	BRIS220FM2	43	ELI10903F3	19	ELI24905F2	20
BRIG120FM1	39	BRIS220FM3	44	ELI10905F1	21	ELI24905F3	21
BRIG120FM2	40	BRIS240FM1	42	ELI10905F2	20	FAD0400FM2	32
BRIG120FM3	41	BRIS240FM2	43	ELI10905F3	20	FAD1000FM2	32
BRIG140FM1	39	BRIS240FM3	44	ELI12222F2	21	FAD1400FM2	32
BRIG140FM2	40	BRIS260FM1	42	ELI12452F2	15	FAI0200FM1	32
BRIG140FM3	41	BRIS260FM2	43	ELI12452F3	15	FAI0200FM2	31
BRIG160FM1	39	BRIS280FM1	42	ELI12453F2	17	FAI0300FM1	32
BRIG160FM2	40	BRIS280FM2	43	ELI12453F3	17	FAI0300FM2	31
BRIG160FM3	41	BRIS300FM1	42	ELI12903F2	18	FAI0400FM3	31
BRIG180FM1	39	BRIS300FM2	43	ELI12903F3	19	FAI0600FM3	31
BRIG180FM2	40	BRIS320FM1	42	ELI12905F1	21	FAI0800FM1	32
BRIG180FM3	41	BRIS340FM1	42	ELI12905F2	20	FAI0800FM3	31
BRIG200FM1	39	BRIS360FM1	42	ELI12905F3	21	FAI1000FM3	31
BRIG200FM2	40	ELD06452F1	16	ELI14222F1	22	FAI1200FM3	31
BRIG200FM3	41	ELD08452F2	15	ELI14222F2	21	FAI1400FM2	31
BRIG220FM1	39	ELD08903F2	19	ELI14452F2	15	FAI1400FM3	31
BRIG220FM2	40	ELD10452F2	15	ELI14452F3	16	FAI1600FM2	31
BRIG220FM3	41	ELD10903F2	19	ELI14453F1	18	FAI1600FM3	31
BRIG240FM1	39	ELD10905F2	20	ELI14453F2	17	FAI1800FM2	31
BRIG240FM2	40	ELD12452F2	15	ELI14453F3	17	FAI1800FM3	31
BRIG240FM3	41	ELD12903F2	19	ELI14903F2	18	FAI2000FM1	32
BRIG260FM1	39	ELD14452F2	15	ELI14903F3	19	FAI2000FM2	31
BRIG260FM2	40	ELD16452F2	15	ELI14905F1	21	FAI2000FM3	31
BRIG280FM2	40	ELD16903F2	19	ELI14905F3	21	FAI2200FM1	32
BRIG300FM1	39	ELI0290F2M	14	ELI16222F3	21	FAI2400FM1	32
BRIG300FM2	40	ELI0345F2M	13	ELI16452F1	16	FAI2400FM2	31
BRIG320FM1	39	ELI0390F1M	14	ELI16452F2	17	FAI2400FM3	31
BRIG340FM1	39	ELI0390F2M	14	ELI16452F3	16	LTD1000FM2	7
BRIS020FM1	42	ELI04903F3	19	ELI16453F2	17	LTD1200FM2	7
BRIS020FM2	43	ELI0490F2M	14	ELI16453F3	17	LTD1400FM2	7
BRIS020FM3	44	ELI06222F2	21	ELI16903F1	18	LTD1600FM1	8
BRIS030FM1	42	ELI06452F2	15	ELI16903F2	18	LTD2400FM2	7
BRIS030FM2	43	ELI06452F3	15	ELI16903F3	19	LT10400FM3	7
BRIS030FM3	44	ELI06453F2	17	ELI16905F2	20	LT10600FM3	7
BRIS040FM1	42	ELI06453F3	17	ELI16905F3	21	LT10800FM1	9
BRIS040FM2	43	ELI0645F2M	13	ELI18222F1	22	LT10800FM2	8
BRIS040FM3	44	ELI06903F1	18	ELI18452F1	16	LT10800FM3	7
BRIS060FM1	42	ELI06903F3	19	ELI18452F2	17	LT11000FM1	9
BRIS060FM2	43	ELI06905F2	20	ELI18452F3	16	LT11000FM1T11	8
BRIS060FM3	44	ELI06905F3	20	ELI18453F1	18	LT11000FM2	8
BRIS080FM1	42	ELI0690F2M	14	ELI18453F2	17	LT11000FM3	7
BRIS080FM2	43	ELI08222F2	21	ELI18903F1	18	LT11200FM1	9
BRIS080FM3	44	ELI08452F1	16	ELI18903F2	18	LT11200FM1T11	8
BRIS100FM1	42	ELI08452F2	15	ELI18903F3	19	LT11200FM2	8
BRIS100FM2	43	ELI08452F3	15	ELI18905F1	21	LT11200FM3	7
BRIS100FM3	44	ELI08453F2	17	ELI20452F1	16	LT11400FM1	9
BRIS120FM1	42	ELI08453F3	17	ELI20452F2	15	LT11400FM2	8
BRIS120FM2	43	ELI08903F1	18	ELI20453F2	17	LT11400FM3	7
BRIS120FM3	44	ELI08903F2	18	ELI20453F3	17	LT11600FM1	8
BRIS140FM1	42	ELI08903F3	19	ELI20903F1	18	LT11600FM2	8
BRIS140FM2	43	ELI08905F1	21	ELI20903F2	18	LT11600FM3	7
BRIS140FM3	44	ELI08905F2	20	ELI20905F2	20	LT11800FM1	9
BRIS160FM1	42	ELI08905F3	20	ELI20905F3	21	LT11800FM2	8
BRIS160FM2	43	ELI10452F1	16	ELI24222F3	21	LT11800FM3	7
BRIS160FM3	44	ELI10452F2	15	ELI24452F2	15	LT12000FM1	9
BRIS180FM1	42	ELI10452F3	15	ELI24452F3	16	LT12000FM2	7
BRIS180FM2	43	ELI10453F1	18	ELI24453F1	18	LT12000FM3	7
BRIS200FM1	42	ELI10453F2	17	ELI24453F2	17	LT12400FM1	9
BRIS200FM2	43	ELI10453F3	17	ELI24453F3	17	LT12400FM2	7
BRIS200FM3	44	ELI10903F1	18	ELI24903F1	19	LT12400FM3	7
BRIS220FM1	42	ELI10903F2	18	ELI24905F1	21	MJD0400FM2	28

Index

Part No.	Page	Part No.	Page	Part No.	Page
MJD0600FM2	28	REI2016FM3	3	RTI1606FM2	12
MJD0800FM2	28	REI2018FM1	5	RTI1606FM3	11
MJD1000FM1	30	REI2018FM2	4	RTI1608FM1	12
MJD1200FM1	30	REI2220FM2	4	RTI1608FM2	12
MJD1200FM2	28	REI2408FM3	3	RTI1608FM3	10
MJD1400FM1	30	REI2410FM3	3	RTI1610FM2	12
MJD1400FM2	28	REI2416FM1	5	RTI1610FM3	11
MJD1600FM1	30	REI2416FM3	3	RTI1612FM1	12
MJD1600FM2	28	REI2418FM1	5	RTI1612FM2	12
MJD1800FM1	30	REI2420FM1	5	RTI1612FM3	11
MJI0300FM2	27	REI2420FM3	3	RTI1614FM3	11
MJI0400FM2	27	REI2422FM2	4	RTI1806FM3	11
MJI0600FM1	29	REPIPE00076	3	RTI1808FM1	12
MJI0600FM2	27	REPIPE00175	5	RTI1808FM3	11
MJI0800FM1	29	RTD0806FM2	10	RTI1810FM1	12
MJI0800FM2	27	RTD1006FM2	10	RTI1810FM3	11
MJI1000FM1	29	RTD1206FM2	10	RTI1812FM1	12
MJI1000FM2	27	RTD1606FM2	10	RTI1812FM2	12
MJI1200FM1	29	RTD1612FM2	10	RTI1812FM3	11
MJI1200FM2	27	RTD1812FM2	10	RTI2006FM3	11
MJI1400FM1	29	RTI0302FM2	11	RTI2008FM1	12
MJI1400FM2	27	RTI0402FM2	11	RTI2008FM2	12
MJI1600FM1	29	RTI0602FM2	11	RTI2008FM3	10
MJI1600FM2	27	RTI0603FM2	10	RTI2010FM3	11
MJI1800FM2	27	RTI0604FM2	11	RTI2012FM2	12
RED0604FM2	4	RTI0803FM1	12	RTI2012FM3	11
RED0806FM2	4	RTI0803FM2	11	RTI2014FM3	11
RED1008FM2	4	RTI0804FM2	10	RTI2016FM3	11
RED1210FM2	4	RTI0806FM1	12	RTI2212FM2	10
RED1412FM2	4	RTI0806FM2	11	RTI2406FM1	12
REI0302FM2	3	RTI0806FM3	11	RTI2406FM2	12
REI0402FM2	3	RTI1002FM2	10	RTI2406FM3	11
REI0403FM2	3	RTI1004FM1	12	RTI2408FM1	12
REI0604FM3	3	RTI1004FM2	11	RTI2408FM2	10
REI0806FM1	5	RTI1004FM3	11	RTI2408FM3	11
REI0806FM2	3	RTI1006FM1	12	RTI2410FM3	11
REI1006FM1	5	RTI1006FM2	10	RTI2412FM1	12
REI1006FM3	3	RTI1006FM3	11	RTI2412FM3	11
REI1008FM1	5	RTI1008FM1	12	WSI0400FM3	23
REI1008FM2	3	RTI1008FM2	11	WSI0600FM3	23
REI1008FM3	3	RTI1008FM3	11	WSI0800FM2	23
REI1208FM1	5	RTI1204FM2	11	WSI0800FM3	23
REI1210FM1	5	RTI1206FM1	12	WSI1000FM2	23
REI1210FM2	3	RTI1206FM2	11	WSI1200FM2	23
REI1210FM3	3	RTI1206FM3	11	WSI1400FM2	23
REI1412FM1	5	RTI1208FM1	12	WSI1600FM2	23
REI1412FM2	3	RTI1208FM2	11		
REI1412FM3	3	RTI1208FM3	11		
REI1606FM1	5	RTI1210FM1	12		
REI1608FM1	5	RTI1210FM2	11		
REI1610FM3	3	RTI1210FM3	11		
REI1614FM1	5	RTI1402FM2	11		
REI1614FM2	3	RTI1403FM2	10		
REI1614FM3	3	RTI1406FM2	12		
REI1806FM1	5	RTI1406FM3	11		
REI1808FM1	5	RTI1408FM2	12		
REI1810FM1	5	RTI1408FM3	11		
REI1812FM3	3	RTI1410FM2	12		
REI1816FM1	5	RTI1412FM2	10		
REI1816FM2	3	RTI1602FM2	12		
REI1816FM3	3	RTI1604FM2	12		
REI2016FM1	5	RTI1606FM1	12		